



# **Tube-Line 5500**

**Parts & Service**

---

## Notes

Electric Solenoid valves can be manually operated by pushing a small punch into the end of spool and holding it in.

### **Caution Stay Away From Hoop When Engine Is Running**

Inside of Control Panel , control relays are numbered CR1 to CR5 from left to right. Relay CR1 is wired to table trigger. CR1 will activate solenoid valve to extend ram cylinder. CR2 is wired to switch at the front slider, when ram is extended to this switch CR2 will close, energizing the wrap motor valve. Ram cylinder will extend and wrap motor will turn until ram comes in contact with slider switch at rear, then CR1 and CR2 will turn off and CR3 will turn on. Wrap motor will stop and ram cylinder will retract until ram cylinder trips limit switch at front end of table. All controls will then turn off. Testing can be done by pushing trigger plate and wait until machine goes through cycle, or you can push small square button on the front of relay 1 and let machine go through cycle.

When control relays are activated a small light goes on inside the relay.

When running machine through the cycle and wrapper motor or the cylinders do not work, check flowcontrol valve to see if flow is going to both motor and cylinder.

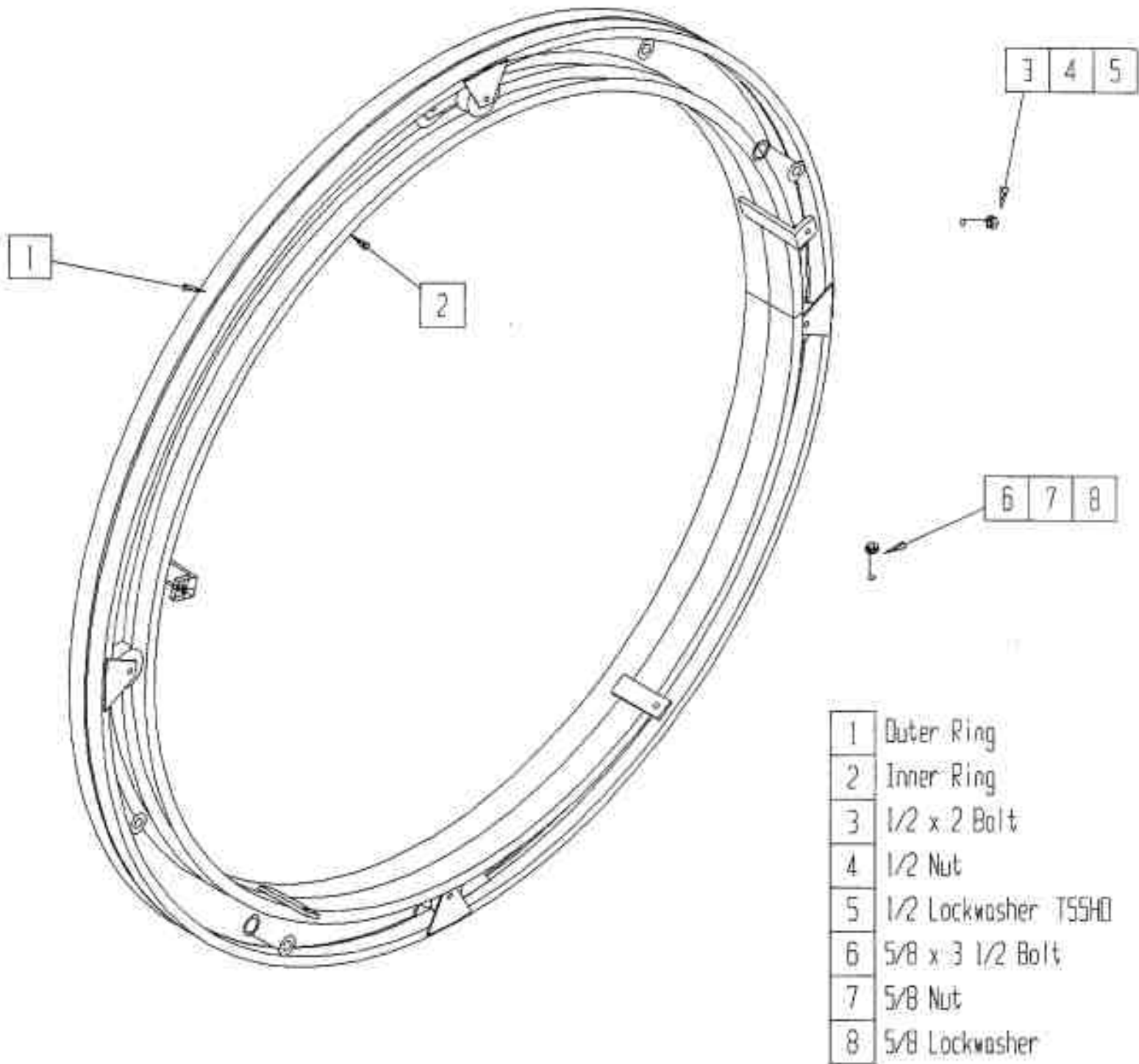
Engine is stopped by grounding ignition, in case of ignition failure make sure that stop switch wire is not grounded to frame and engine switch is not in stop position.

Steering is controlled by switch right/left on control panel through CR5 and CR6 activating coil A or B on steering solenoid valve.

**Tube-Line 550  
Parts Manual  
Index**

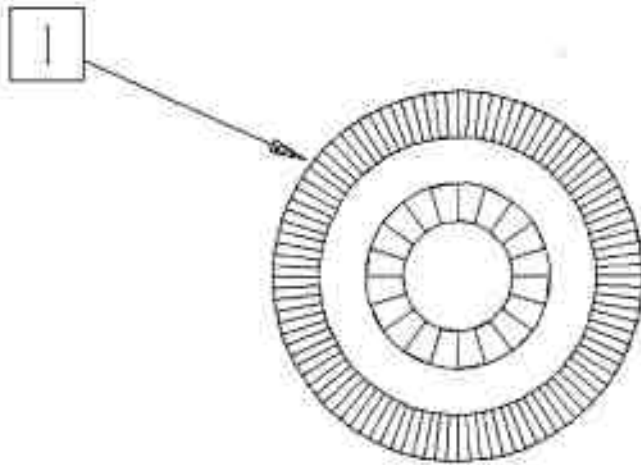
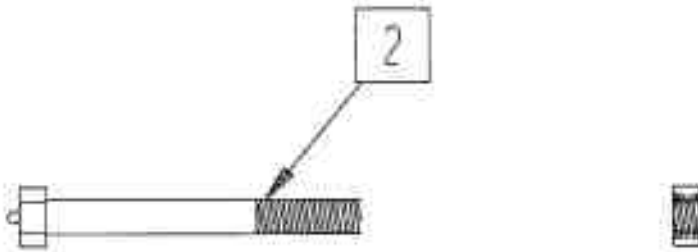
Hoop	1
Hoop Wheels and Axle	2
Wrapper Hardware	3
Safety Mesh	4
Drive Wheel and Hydraulic Motor	5
Hubs	6
Brakes	7
Rear Roller	8
Tail	9
Bale Saddle	10
Ram	11
Push Tube	12
Pushoff Channel	13
Tongue	14
Mud Flap	15
Hydraulic Tank and Filter	16
Engine and Hydraulic Pump	17
Engine Cover and Decal Plate	18
Hydraulic Valve ( manual )	19
Hydraulic Valve ( automatic )	20
Limit Switch	21
Control Panel	22
Bale Trigger and Battery holder	23
Throttle	24
Hydraulic Schematic Diagram ( manual )	25
Hydraulic Schematic Diagram ( automatic )	26
Electric Wiring Diagram	27
Electric Schematic Diagram ( automatic )	28
Sequence of Operation ( manual )	29
Sequence of Operation ( automatic )	30
Part Numbers	
Hydraulic Valve Parts	

# Tube-Line 5500 Hoop

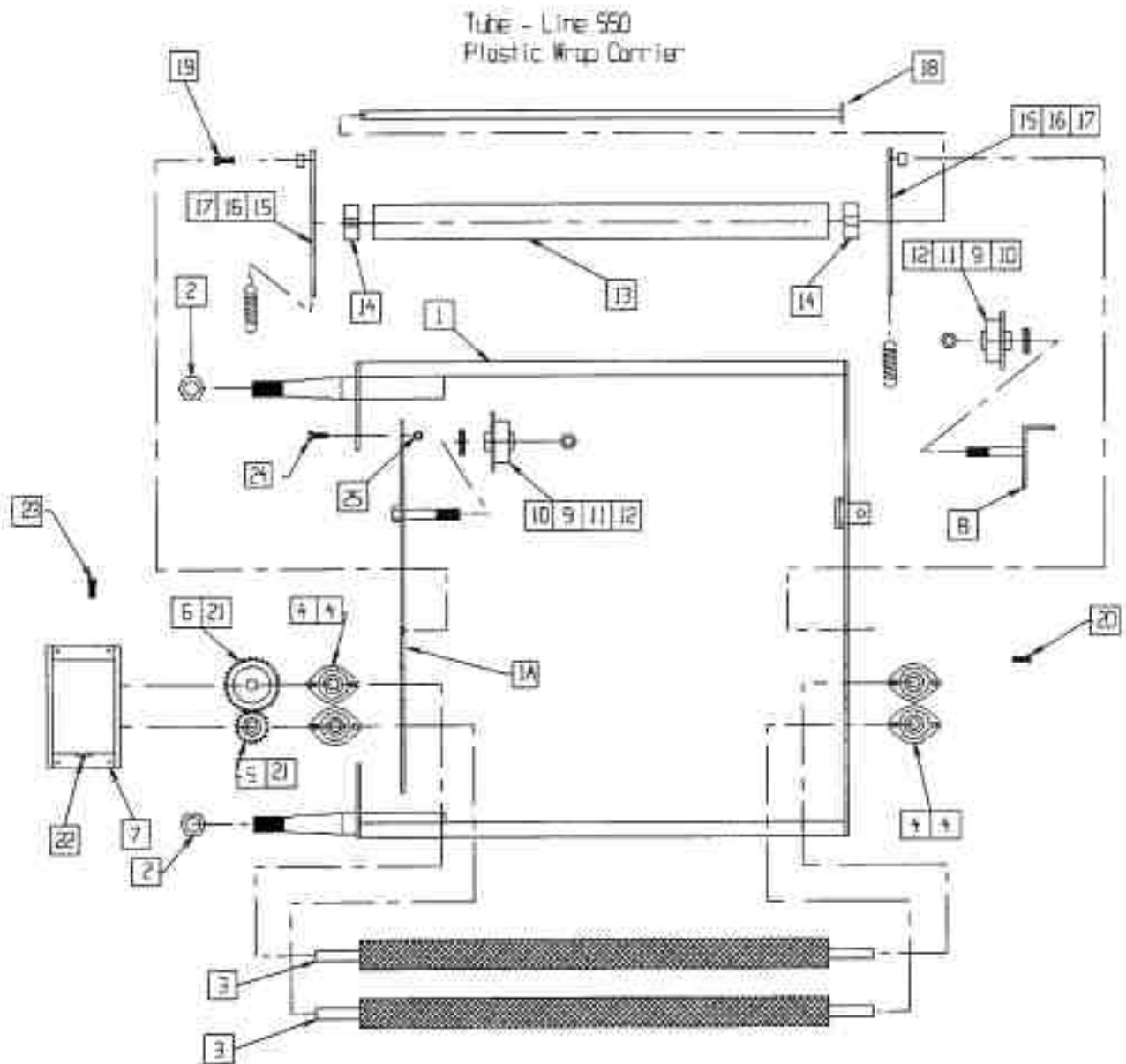


# Tube-Line 5500

Hoop wheels

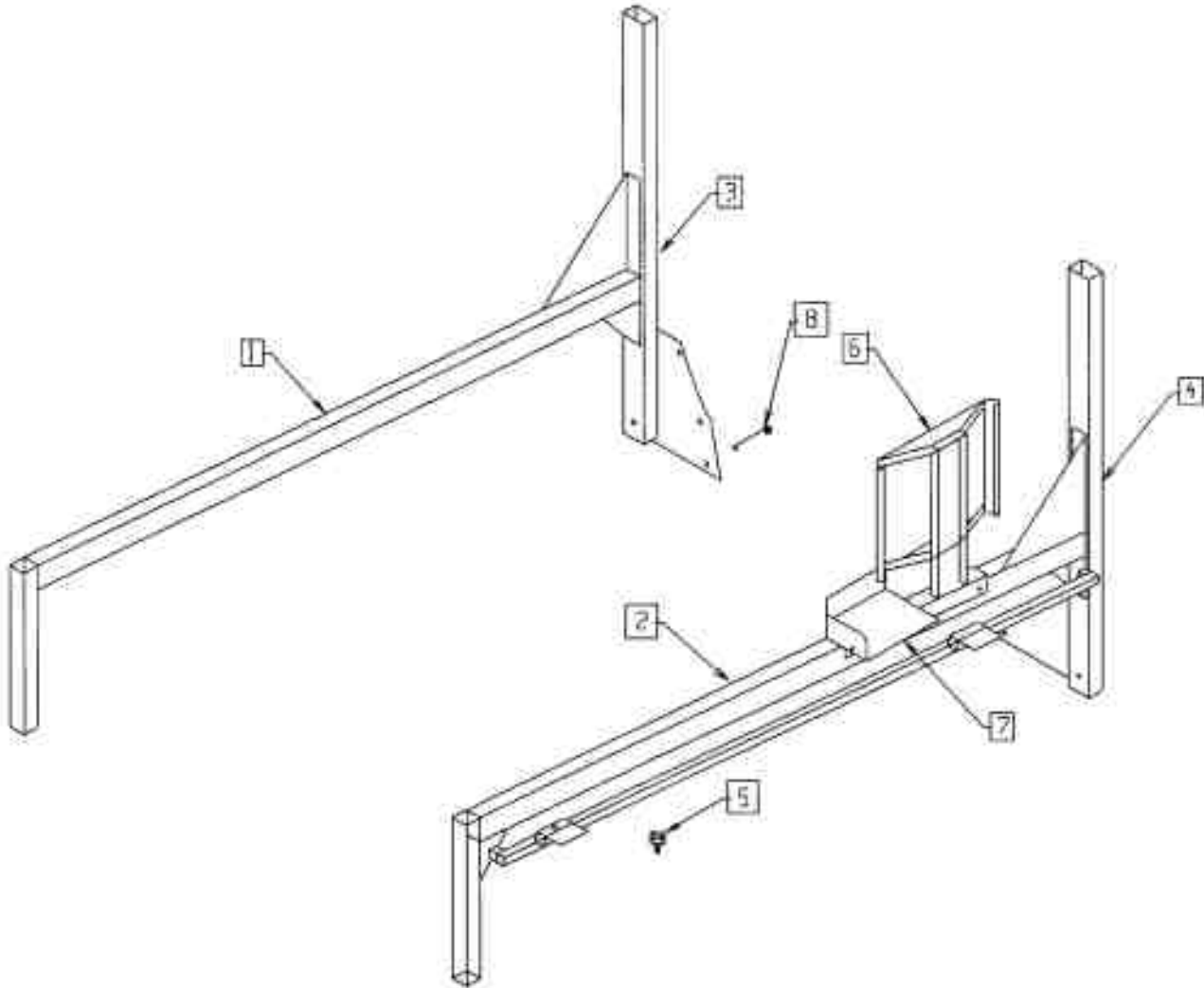


- 1 4 in wheel
- 2 axle bolt c/w Locknut

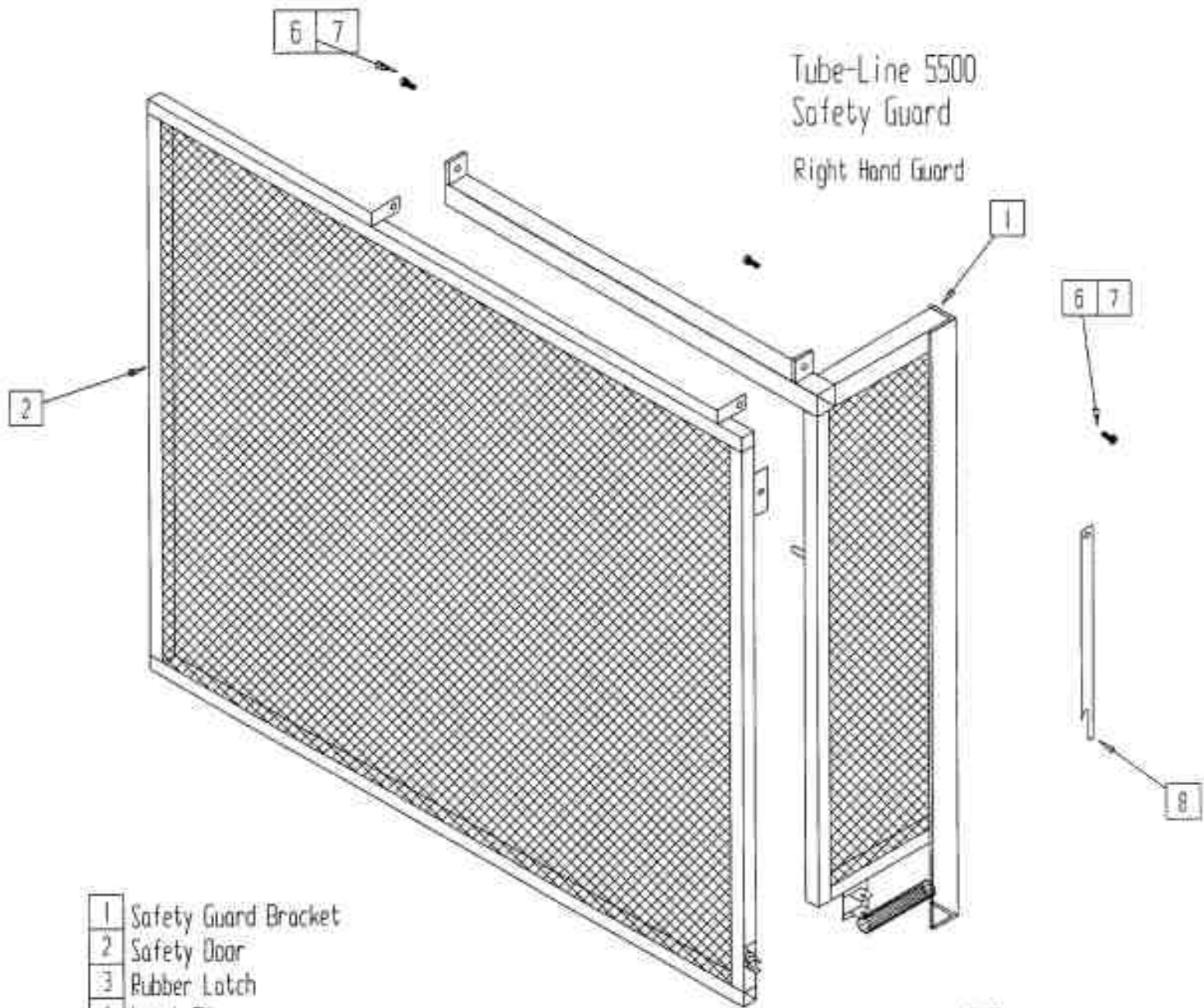


- |    |                       |    |                          |
|----|-----------------------|----|--------------------------|
| 1  | Main Wrap Bracket     | 13 | ABS Pipe                 |
| 1A | Main Wrap Side Insert | 14 | HMPVC Bearing            |
| 2  | 1-14 UNC Nut          | 15 | ABS Bracket              |
| 3  | Tensioner Roller      | 16 | Spacer                   |
| 4  | 3/4 Bearing           | 17 | Spring                   |
| 5  | Small Gear            | 18 | Axle Shaft               |
| 6  | Large Gear            | 19 | 1/2 x 2 Bolt             |
| 7  | Gear Cover            | 20 | 5/16 Carriage Bolt       |
| 8  | Spool Holder          | 21 | 3/16 Keystock            |
| 9  | Plastic Wrap Spool    | 22 | Grease Fitting           |
| 10 | 5/8 Flat washer       | 23 | 10-24 x 3/4 Machine Bolt |
| 11 | 5/8 Nylocknut         | 24 | 3/8 x 1 #5 Bolt          |
| 12 | Oilite Bearing        | 25 | 3/8 Locknut              |

Tubeline 9500  
Hoop Brace Assy.

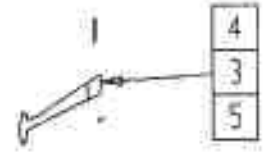


- 1 Right Hand Hoop Brace
- 2 Left Hand Hoop Brace
- 3 Right Hand Hoop Post
- 4 Left Hand Hoop Post
- 5 Switch Adjuster Screw
- 6 Automatic Control Panel Mount
- 7 Manual Control Mount
- 8 1/2 x 4 1/2 Bolt

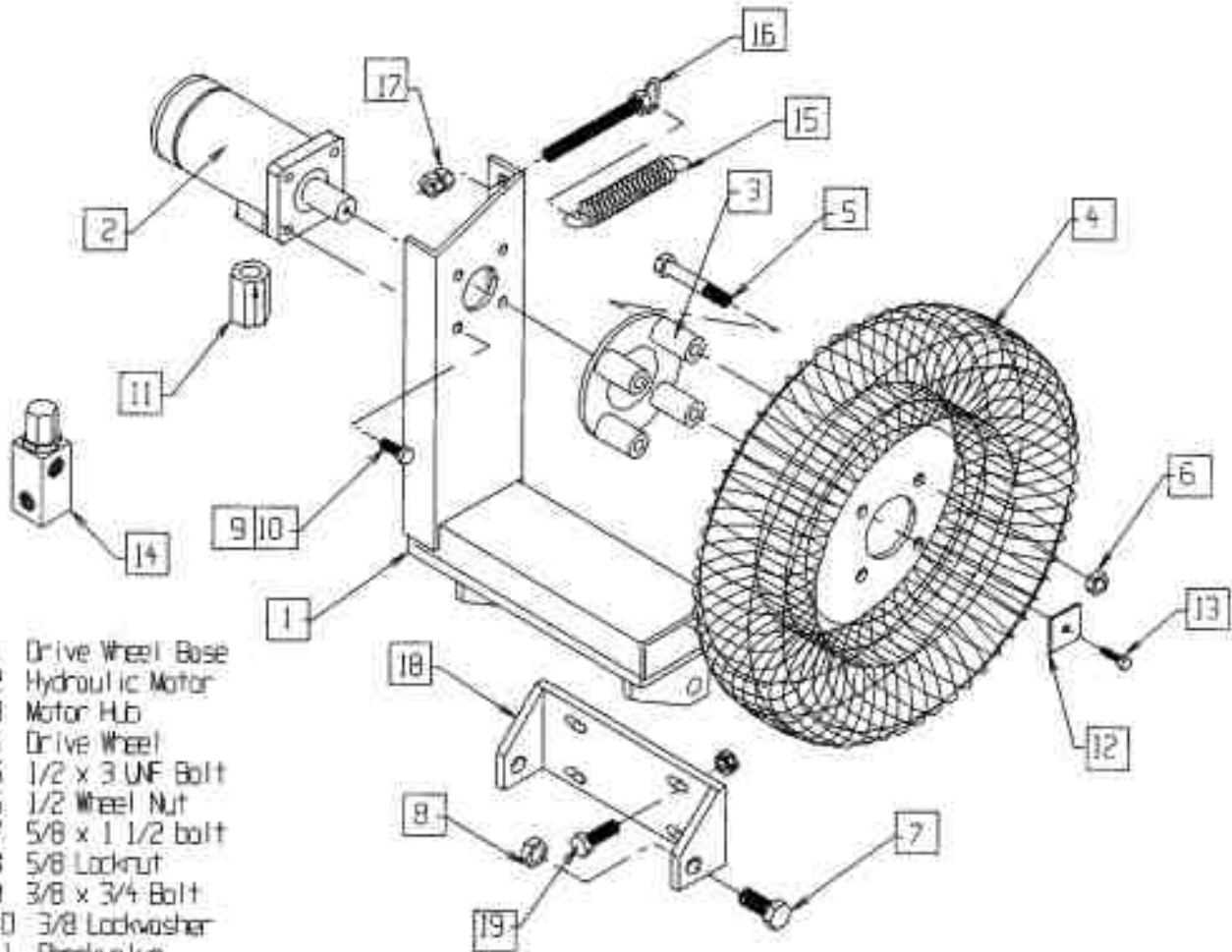


Tube-Line 5500  
Safety Guard  
Right Hand Guard

- |   |                        |
|---|------------------------|
| 1 | Safety Guard Bracket   |
| 2 | Safety Door            |
| 3 | Rubber Latch           |
| 4 | Latch Pin              |
| 5 | Cotter Pin             |
| 6 | 3/8 x 1 1/4 Hinge Bolt |
| 7 | 3/8 Locknut            |
| 8 | Door Stay              |



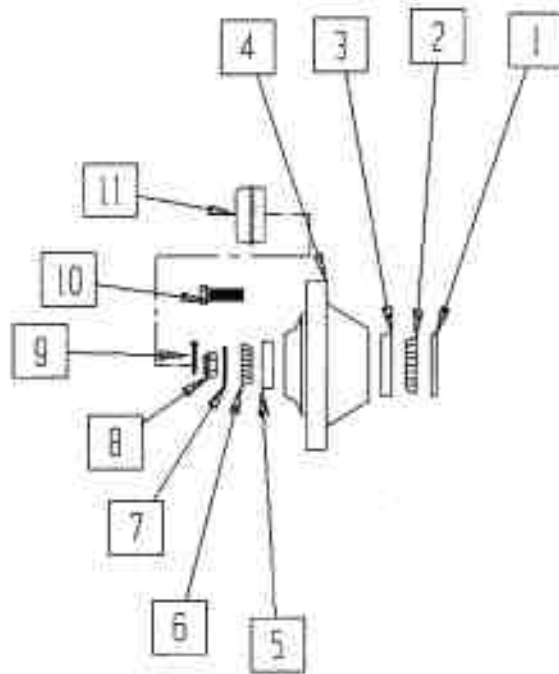
**Tubeline 5500  
Drive Wheel**



- 1 Drive Wheel Base
- 2 Hydraulic Motor
- 3 Motor Hub
- 4 Drive Wheel
- 5 1/2 x 3 UNF Bolt
- 6 1/2 Wheel Nut
- 7 5/8 x 1 1/2 bolt
- 8 5/8 Locknut
- 9 3/8 x 3/4 Bolt
- 10 3/8 Lockwasher
- 11 Checkvalve
- 12 Wheel Washer
- 13 1/4 x 1 Bolt c/w Lockwasher
- 14 Relief Valve (manual model only)
- 15 Wheel Tensioner Spring
- 16 Spring Tensioner Bolt
- 17 1/2 Nuts
- 18 Drive Wheel Base Bracket
- 19 3/8 x 1 1/2 bolt, c/w nut, washer & lockwasher

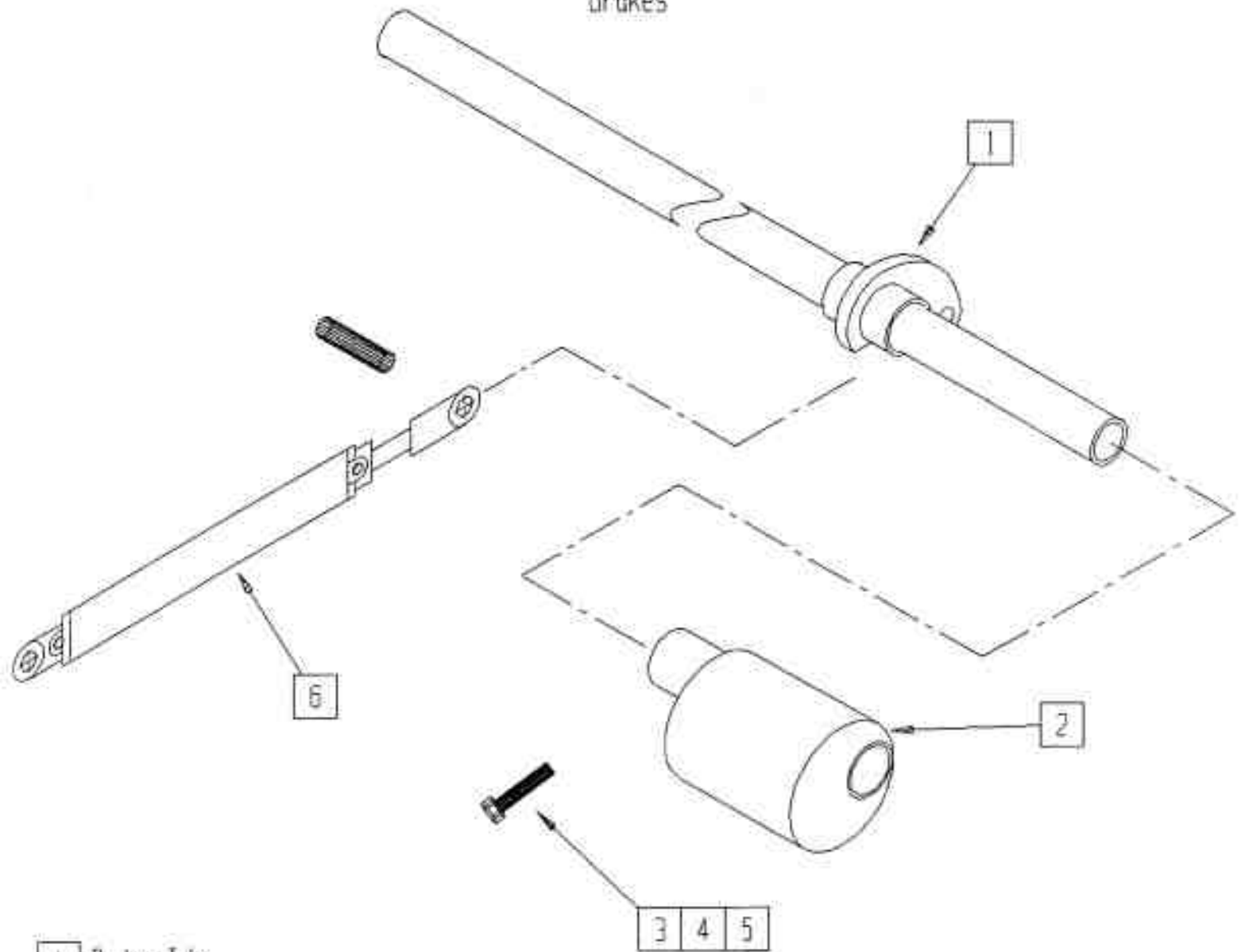
# Tube-Line 5500

Axle/spindle/hub



1	seal
2	inner bearing
3	inner bearing race
4	hub
5	outer bearing race
6	outer bearing
7	flat washer
8	wheel nut
9	cotter pin
10	wheel stud
11	dust cap

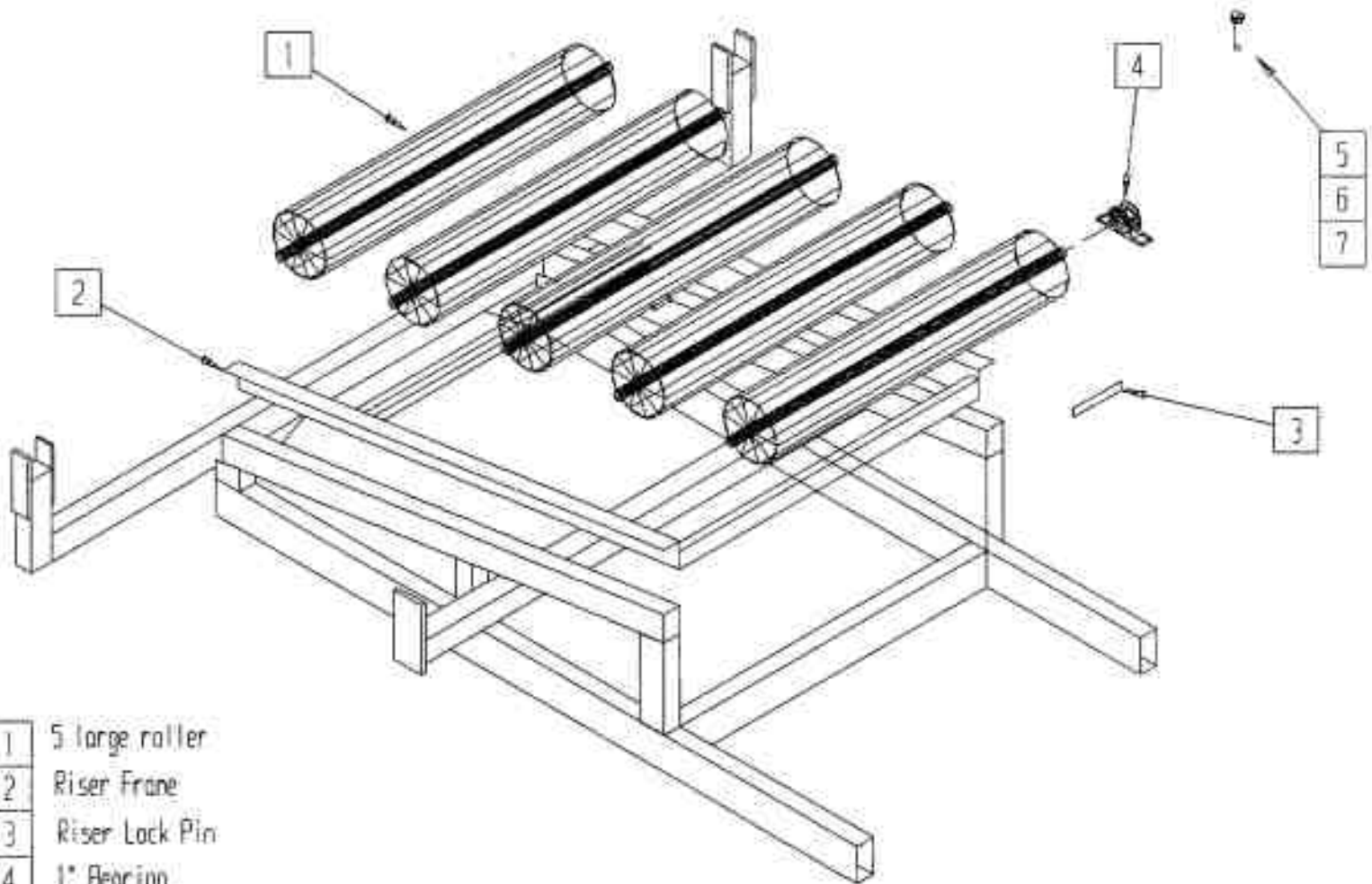
Tube - Line 5500  
Brakes



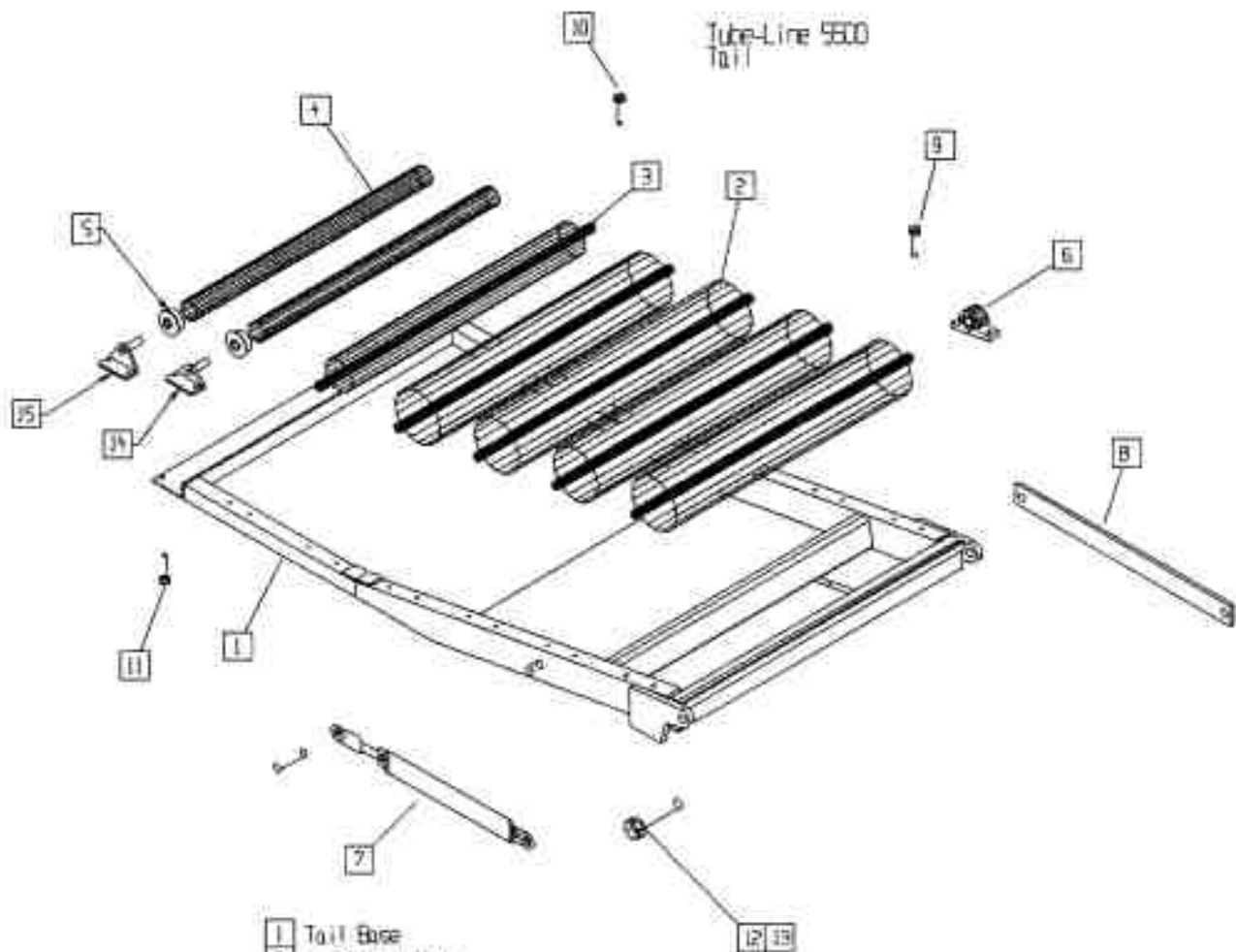
- |   |                              |
|---|------------------------------|
| 1 | Rocker Tube                  |
| 2 | 2 pc brake eccentric         |
| 3 | 2 pc 1/2 x 3 1/2 bolt        |
| 4 | 2 pc lockwasher              |
| 5 | 2 pc 1/2 nut                 |
| 6 | 2 1/2 x 8 hydraulic cylinder |

# Tube-Line 5500

rear roller

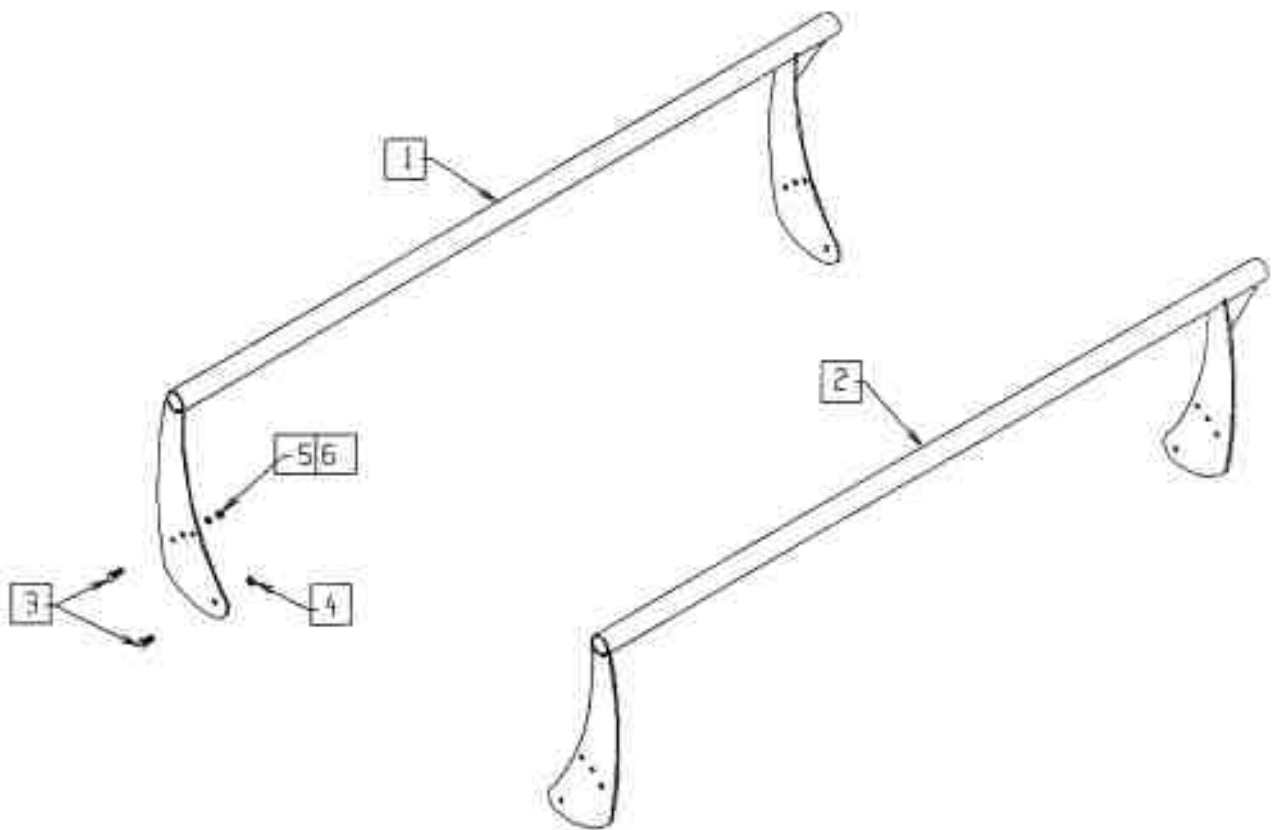


- |   |                        |
|---|------------------------|
| 1 | 5 large roller         |
| 2 | Riser Frame            |
| 3 | Riser Lock Pin         |
| 4 | 1" Bearing             |
| 5 | 20 pc 3/8 x 1 1/2 Bolt |
| 6 | 20 pc 3/8 lockwasher   |
| 7 | 20 pc 3/8 Flatwasher   |



- 1 Tail Base
- 2 4 large roller
- 3 1 pc 4" roller
- 4 2 pc 3" roller
- 5 4 pc 3/4" bearing
- 6 10 pc 1" bearing
- 7 3 X 12 hydraulic cylinder
- 8 tail tie bar
- 9 3/8 x 1 1/2 bolt
- 10 5/16 x 1 bolt
- 11 4 pc 5/16 x 1 1/2 bolt
- 12 2 pc 1 x 3 1/2 bolt
- 13 2 pc 1" Nylonnut
- 14 First Small Roller bracket
- 15 Last Small Roller bracket

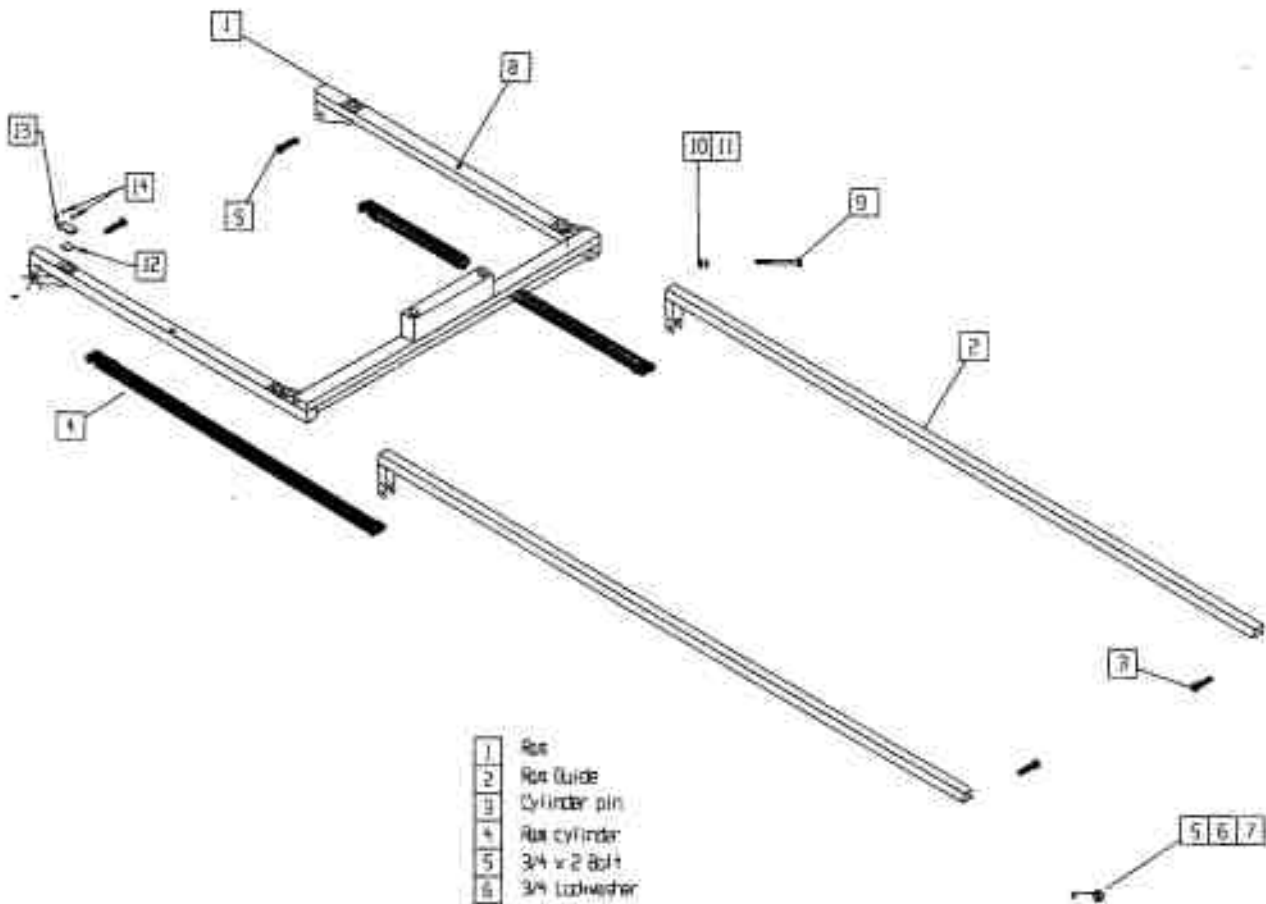
Tubeline 5500  
Bale Saddle



- 1 Bale Saddle (Right Side)
- 2 Bale Saddle (Left Side)
- 3 1/2 x 1 1/4 Bolt
- 4 1/2 Locknut
- 5 1/2 Nut
- 6 1/2 Lockwasher

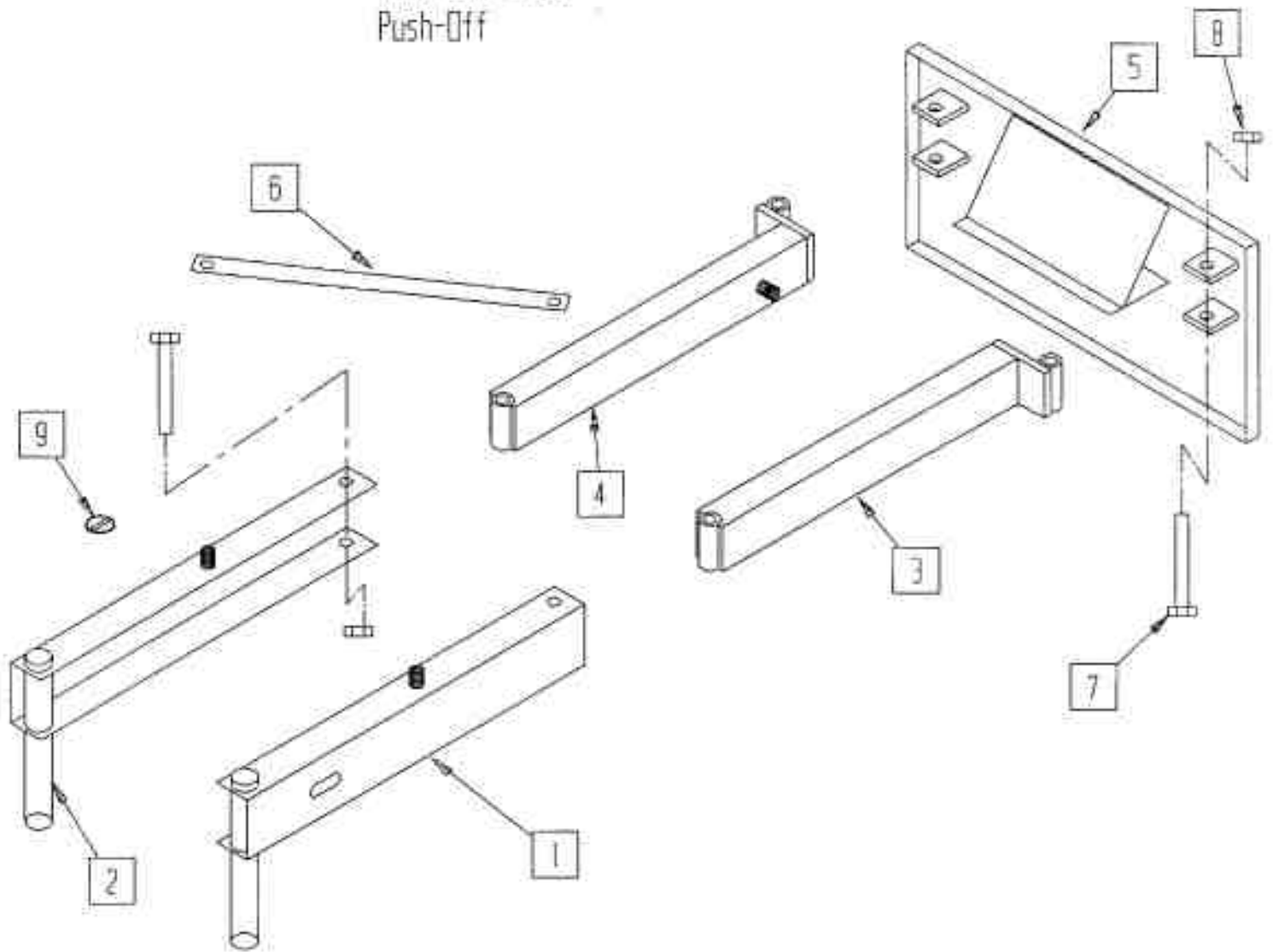
# Tube-Line 5500

## Ram



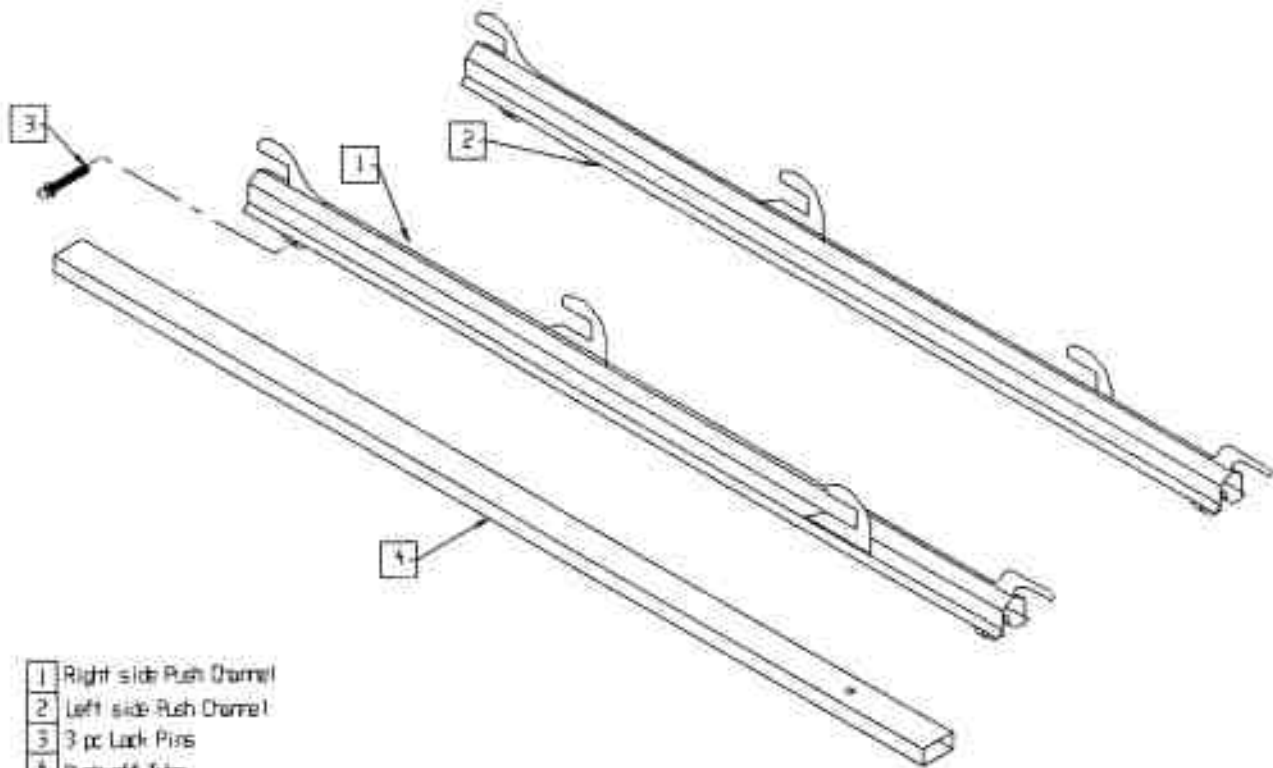
1	Ram
2	Ram Guide
3	Cylinder pin
4	Ram cylinder
5	3/4 x 2 Bolt
6	3/4 Lockwasher
7	3/4 Flatwasher
8	2 pc. 1/4 - 28 grease fitting
9	2 pc. 1/2 x 1/4 bolt
10	2 pc. 1/2 nut
11	2 pc. 1/2 lockwasher
12	1/2 x 2 x 2 HMPVC slider block
13	Slider Retainer
14	1/4 x 1/2 Hex Socket Bolt

Tube-Line 5500  
Push-Off

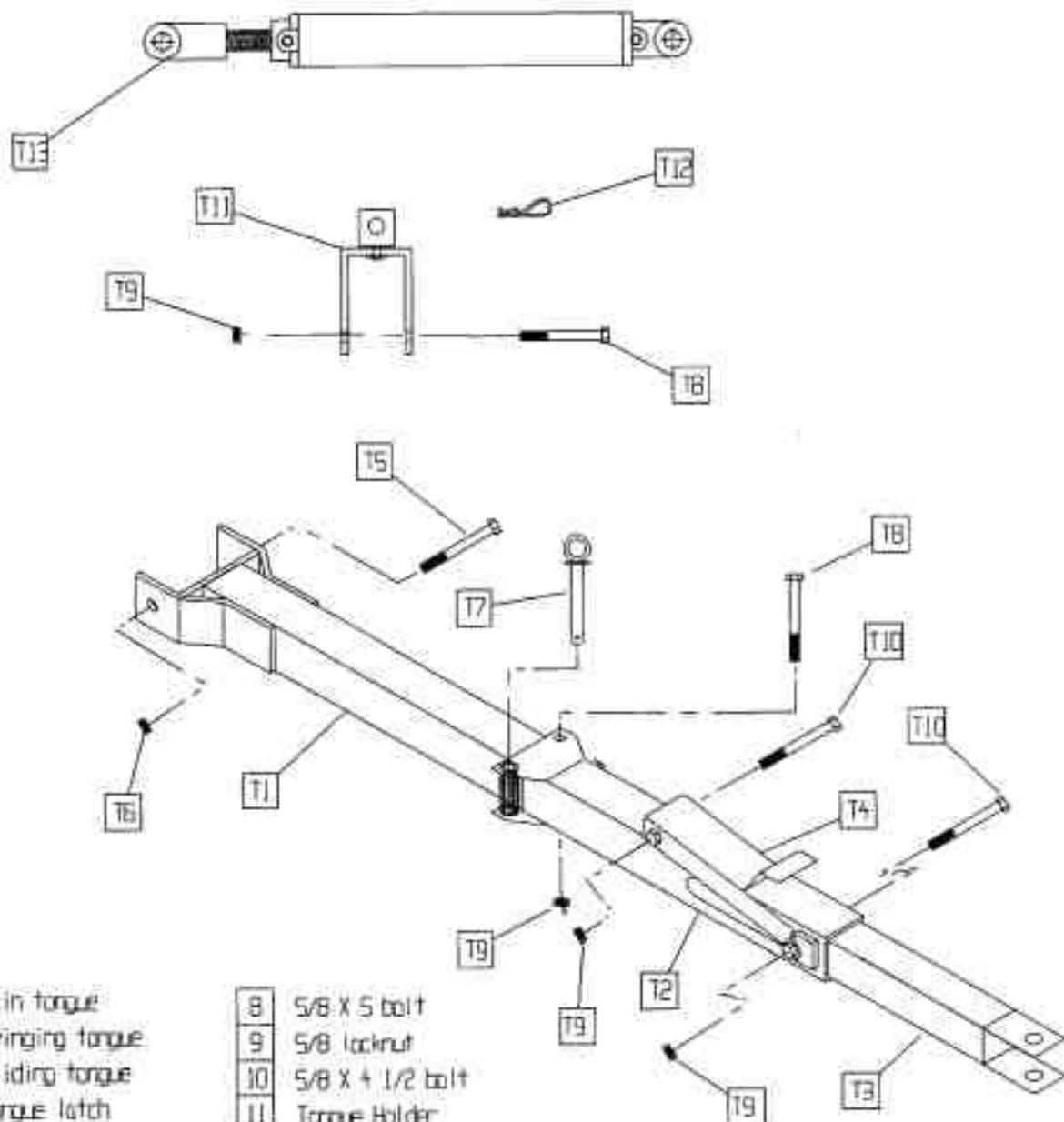


1	Left Front Arm
2	Right Front Arm
3	Left Rear Arm
4	Right Rear Arm
5	Push Plate
6	2 pc X Bar
7	4 pc 3/4 x 5 Bolt
8	4 pc 3/4 Nylocknut
9	4 pc 3/16 Lynch Pin

Tube line 5500  
Push off Channel



# Tube-Line 5500 Tongue

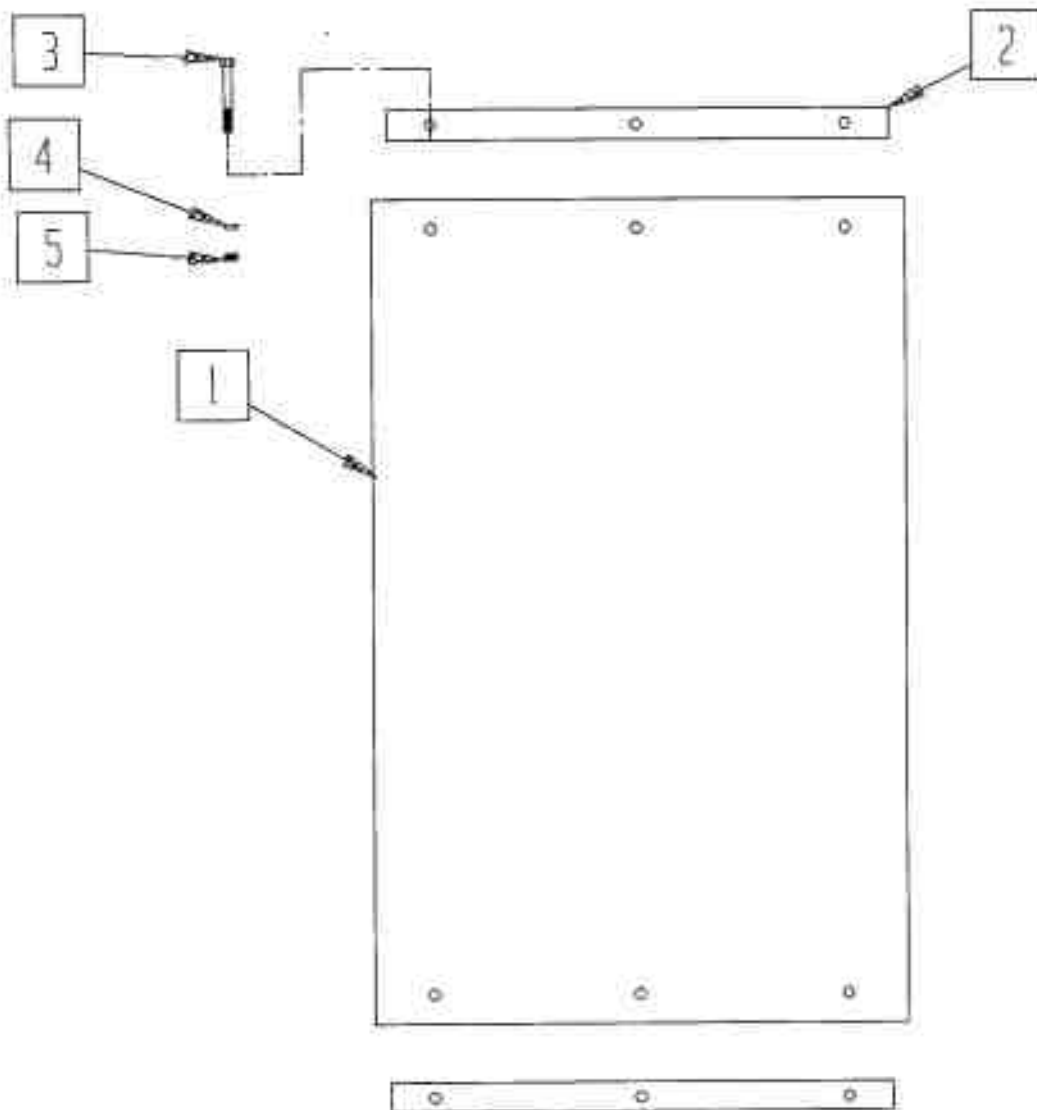


- |   |                 |
|---|-----------------|
| 1 | Main tongue     |
| 2 | Swinging tongue |
| 3 | Sliding tongue  |
| 4 | Tongue latch    |
| 5 | 7/8 x 8 bolt    |
| 6 | 7/8 locknut     |
| 7 | Tongue pin      |

- |    |                           |
|----|---------------------------|
| 8  | 5/8 X 5 bolt              |
| 9  | 5/8 locknut               |
| 10 | 5/8 X 1/2 bolt            |
| 11 | Tongue Holder             |
| 12 | Hair pin                  |
| 13 | 2 X 16 Hydraulic Cylinder |

# Tube-Line 5500

Mud Flap



1	mud flap
2	metal strip
3	bolt
4	lockwasher
5	nut

