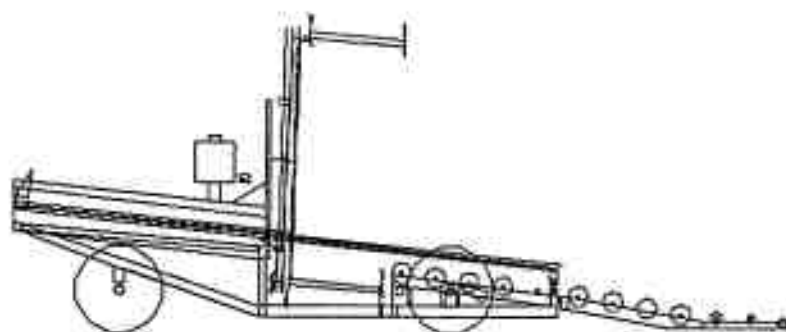


Tube-Line 5500

Parts & Service

1999



Notes

Electric Solenoid valves can be manually operated by pushing a small punch into the end of spool and holding it in.

Caution Stay Away From Hoop When Engine Is Running

Inside of Control Panel , control relays are numbered CR1 to CR5 from left to right.

Relay CR1 is wired to table trigger. CR1 will activate solenoid valve to extend ram cylinder. CR2 is wired to switch at the front slider, when ram is extended to this switch CR2 will close, energizing the wrap motor valve. Ram cylinder will extend and wrap motor will turn until ram comes in contact with slider switch at rear, then CR1 and CR2 will turn off and CR3 will turn on. Wrap motor will stop and ram cylinder will retract until ram cylinder trips limit switch at front end of table. All controls will then turn off. Testing can be done by pushing trigger plate and wait until machine goes through cycle, or you can push small square button on the front of relay 1 and let machine go through cycle.

When control relays are activated a small light goes on inside the relay.

When running machine through the cycle and wrapper motor or the cylinders do not work, check flowcontrol valve to see if flow is going to both motor and cylinder.

Engine is stopped by grounding ignition, in case of ignition failure make sure that stop switch wire to frame and engine switch is not in stop position.

Steering is controlled by switch right/left on control panel through CR5 and CR6 activating coil A or B on steering solenoid valve.

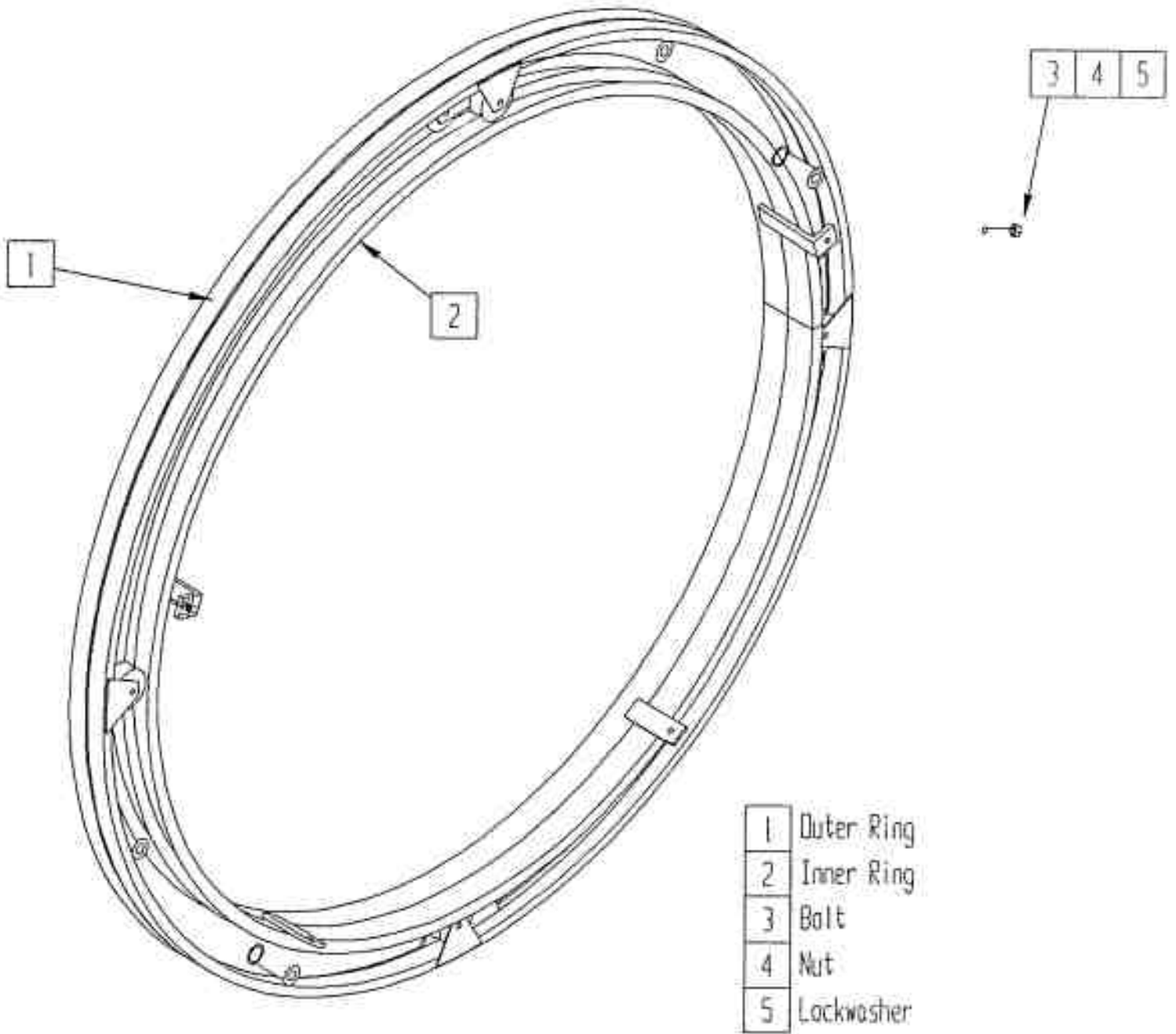
TUBE-LINE 5500

Parts Manual

Index

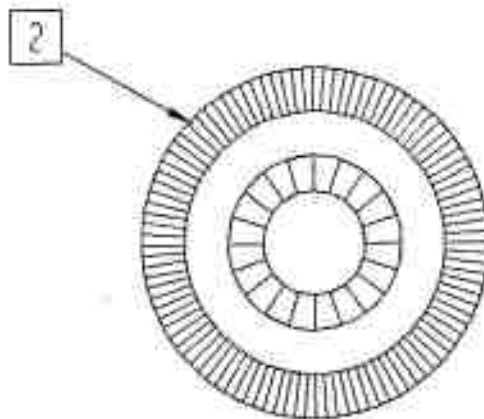
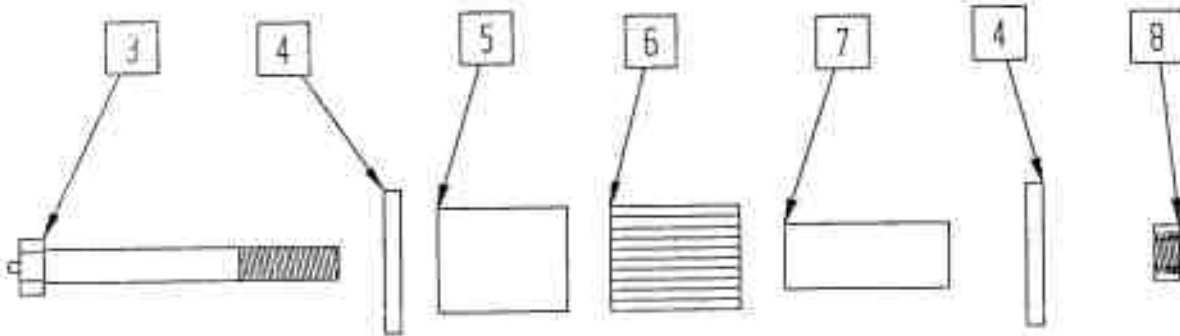
Hoop	1
Hoop Wheels and Axle	2
Wrapper Hardware	3
Hoop Brace	4
Safety Mesh	5
Drive Wheel & Hydraulic Motor	6
Hubs	7
Brakes	8
Rear Roller	9
Tail	10
Bale Saddle	11
Ram	12
Push Tube	13
Pushoff Channel	14
Tongue	15
Mud Flap	16
Hydraulic Tank and Filter	17
Engine and Hydraulic Pump	18
Engine Cover and Decal Plate	19
Hydraulic Valve (manual)	20
Hydraulic Valve (electric)	21
Limit Switch	22
Control Panel	23
Bale Trigger and Battery Holder	24
Throttle	25
Hydraulic Schematic Diagram (manu	26
Hydraulic Schematic Diagram (electr	27
Electric Wiring Diagram	28
Electric Schematic Diagram (electric	29
Sequence Of Operation (manual)	30
Sequence Of Operation (electric)	31
Part Number	
Hydraulic Valve Parts	

Tube-Line 550
Hoop



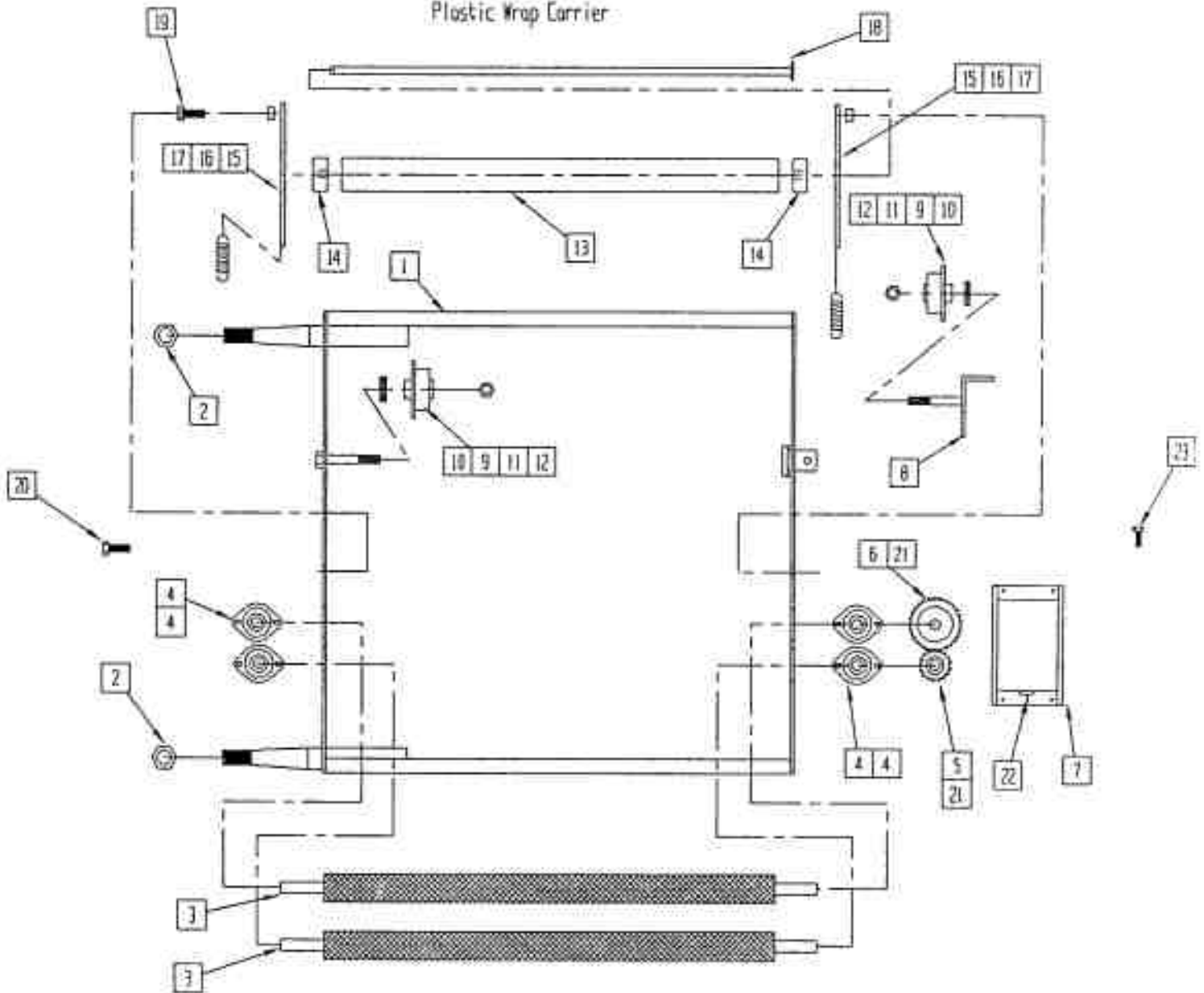
Tube-Line 550

Hoop wheels



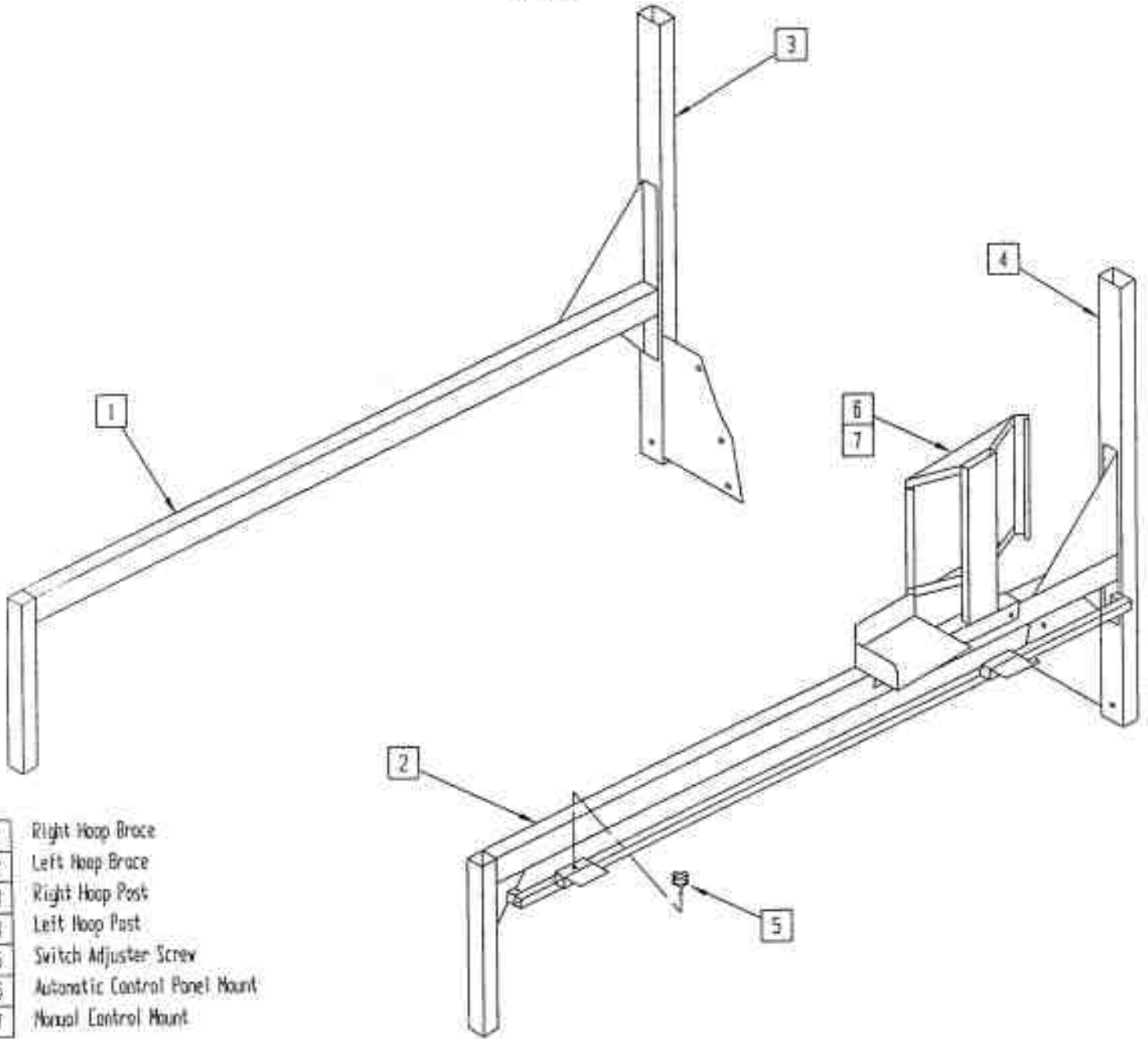
- | | |
|---|----------------|
| 2 | 4 in wheel |
| 3 | axle bolt |
| 4 | bearing seal |
| 5 | outer race |
| 6 | roller bearing |
| 7 | inner race |
| 8 | locknut |

Tube - Line 550
Plastic Wrap Carrier

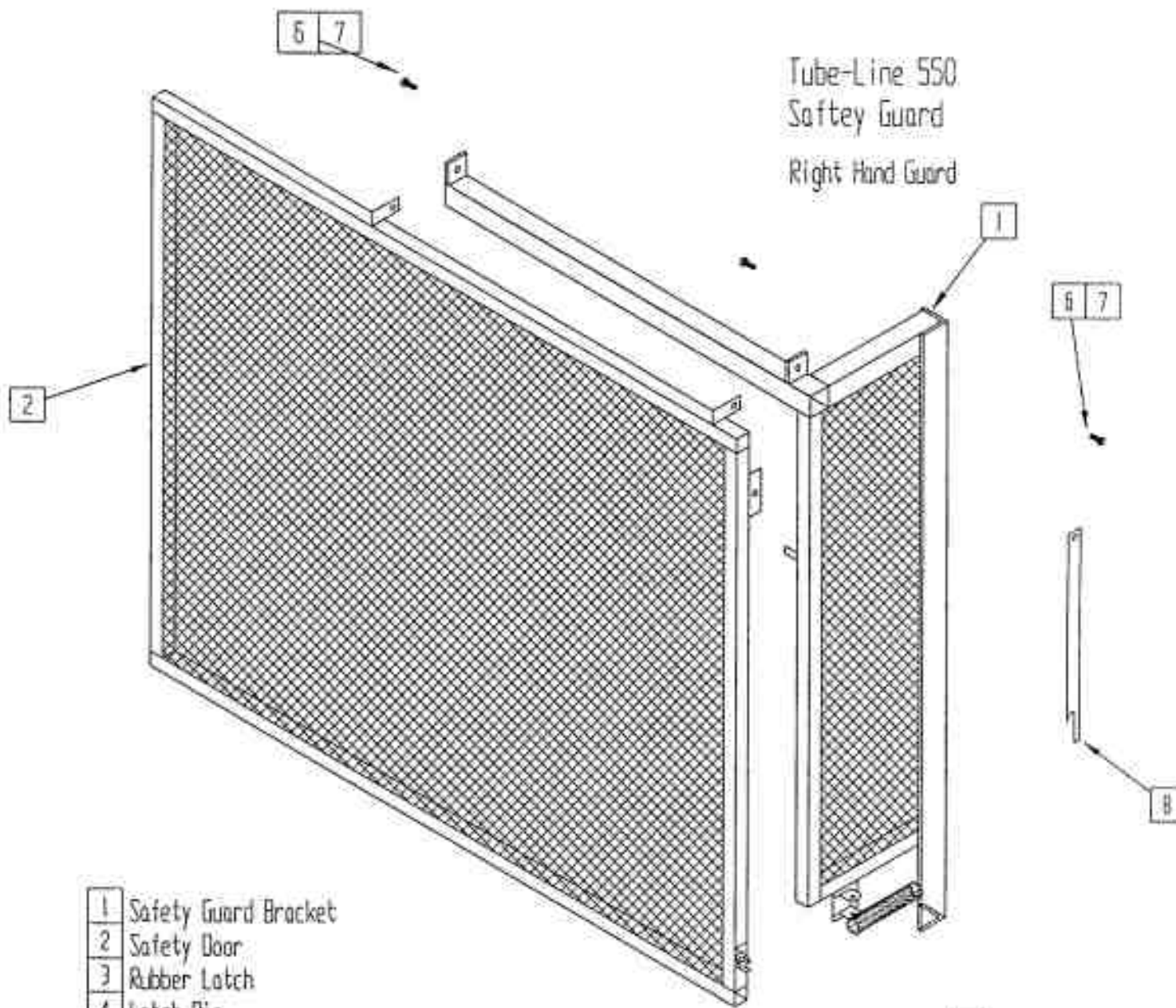


- | | | | |
|----|--------------------|----|--------------------------|
| 1 | Main Wrap Bracket | 13 | ABS Pipe |
| 2 | 1-14 UNC Nut | 14 | HMPVC Bearing |
| 3 | Tensioner Roller | 15 | ABS Bracket |
| 4 | 3/4 Bearing | 16 | Spacer |
| 5 | Small Gear | 17 | Spring |
| 6 | Large Gear | 18 | ABS Axle |
| 7 | Gear Cover | 19 | 1/2 x 2 Bolt |
| 8 | Spool Holder | 20 | 5/16 Carriage Bolt |
| 9 | Plastic Wrap Spool | 21 | 3/16 Keystock |
| 10 | 5/8 Flat washer | 22 | Grease Fitting |
| 11 | 5/8 Nylocknut | 23 | 10-24 x 3/4 Machine Bolt |
| 12 | Ball Bearing | | |

TubeLine S99
Hoop Brace

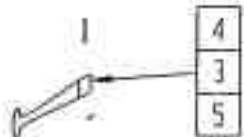


- | | |
|---|-------------------------------|
| 1 | Right Hoop Brace |
| 2 | Left Hoop Brace |
| 3 | Right Hoop Post |
| 4 | Left Hoop Post |
| 5 | Switch Adjuster Screw |
| 6 | Automatic Control Panel Mount |
| 7 | Manual Control Mount |



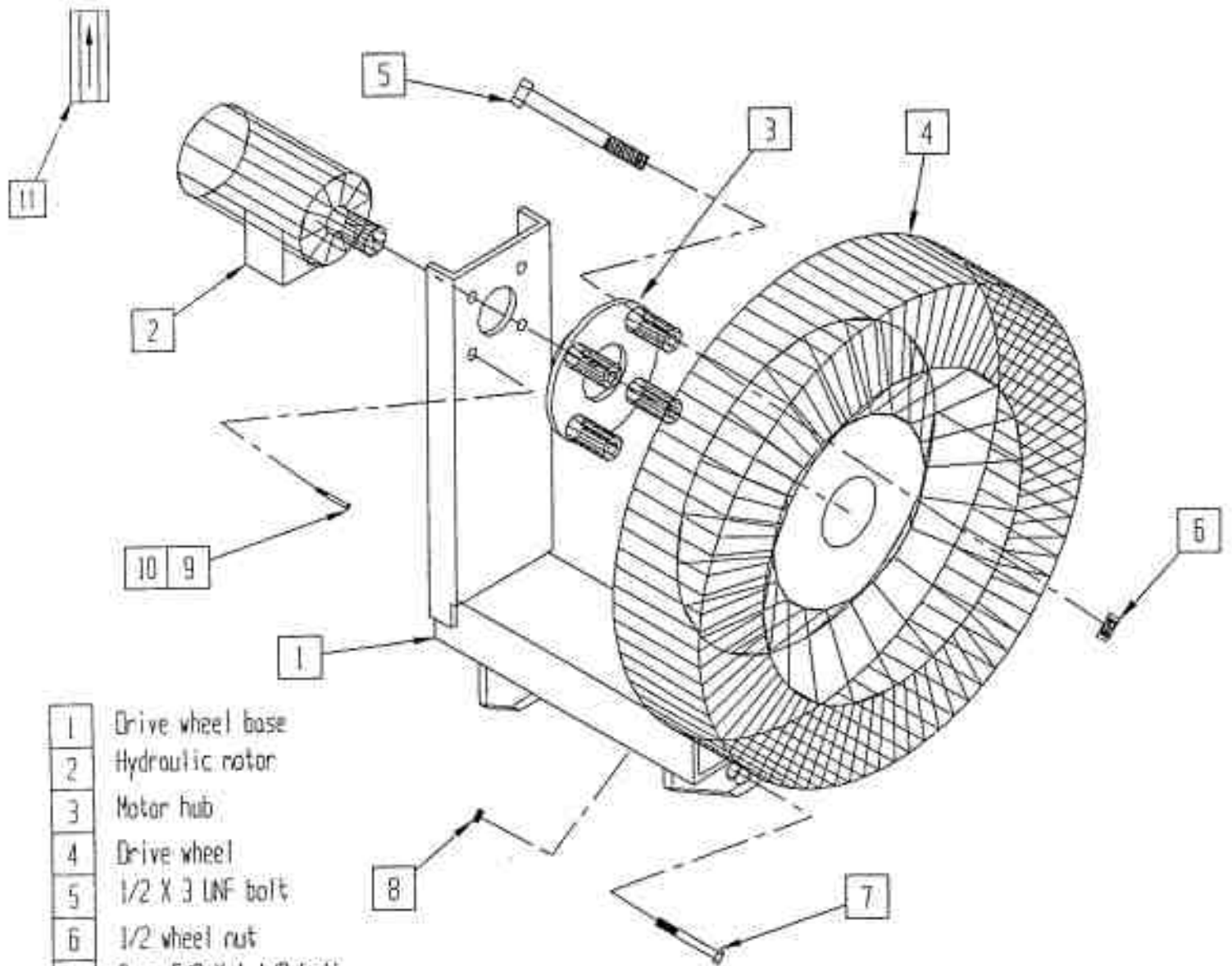
Tube-Line 550
Safety Guard
Right Hand Guard

- | | |
|---|------------------------|
| 1 | Safety Guard Bracket |
| 2 | Safety Door |
| 3 | Rubber Latch |
| 4 | Latch Pin |
| 5 | Cotter Pin |
| 6 | 3/8 x 1 1/4 Hinge Bolt |
| 7 | 3/8 Locknut |
| 8 | Door Stay |



Tube-Line 550

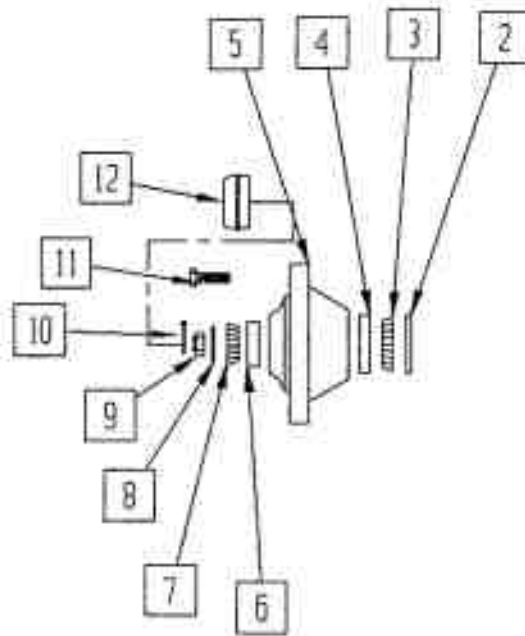
Drive wheel



- | | |
|----|-----------------------|
| 1 | Drive wheel base |
| 2 | Hydraulic motor |
| 3 | Motor hub |
| 4 | Drive wheel |
| 5 | 1/2 X 3 UNF bolt |
| 6 | 1/2 wheel nut |
| 7 | 2 pc 5/8 X 1 1/2 bolt |
| 8 | 2 pc 5/8 locknut |
| 9 | 4 pc 3/8 X 3/4 bolt |
| 10 | 4 pc 3/8 lockwasher |
| 11 | Check Valve |

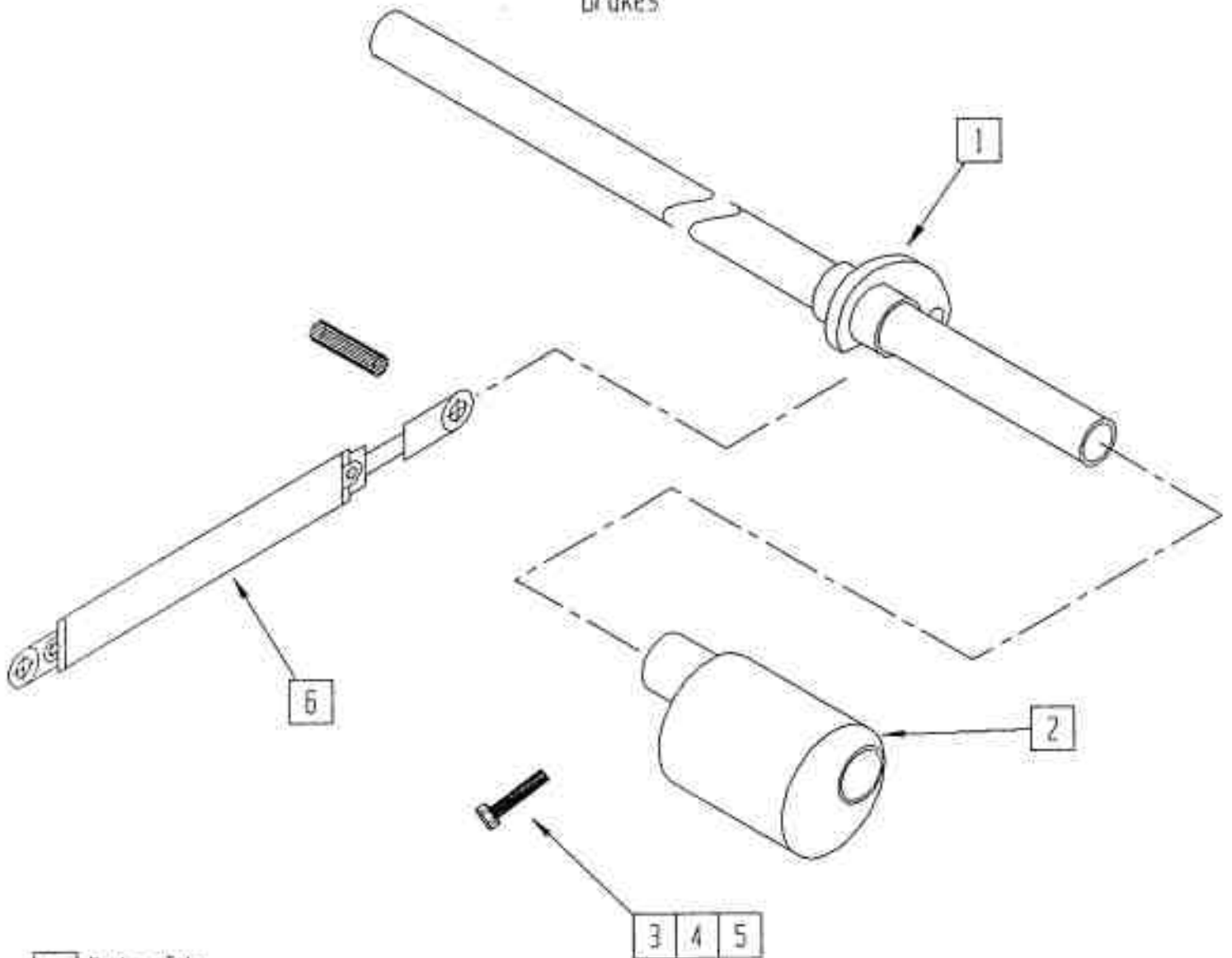
Tube-Line 550

Axle/spindle/hub



2	seal
3	inner bearing
4	inner bearing race
5	hub
6	outer bearing race
7	outer bearing
8	flat washer
9	wheel nut
10	cotter pin
11	wheel stud
12	dust cap

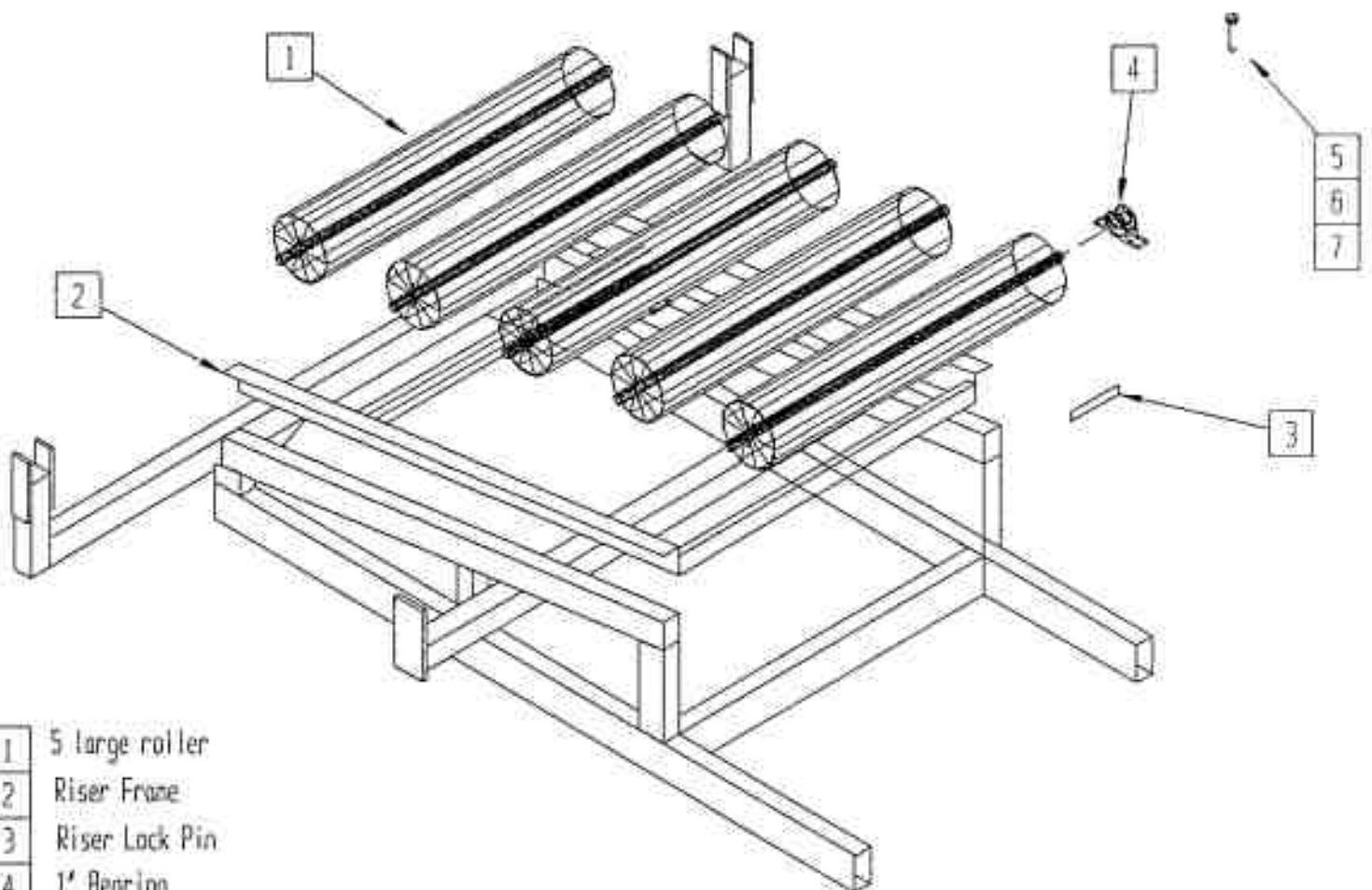
Tube - Line 550
Brakes



- | | |
|---|---------------------------|
| 1 | Rocker Tube |
| 2 | 2 pc broke eccentric |
| 3 | 2 pc 1/2 x 3 1/2 bolt |
| 4 | 2 pc lockwasher |
| 5 | 2 pc 1/2 nut |
| 6 | 2 x 16 hydraulic cylinder |

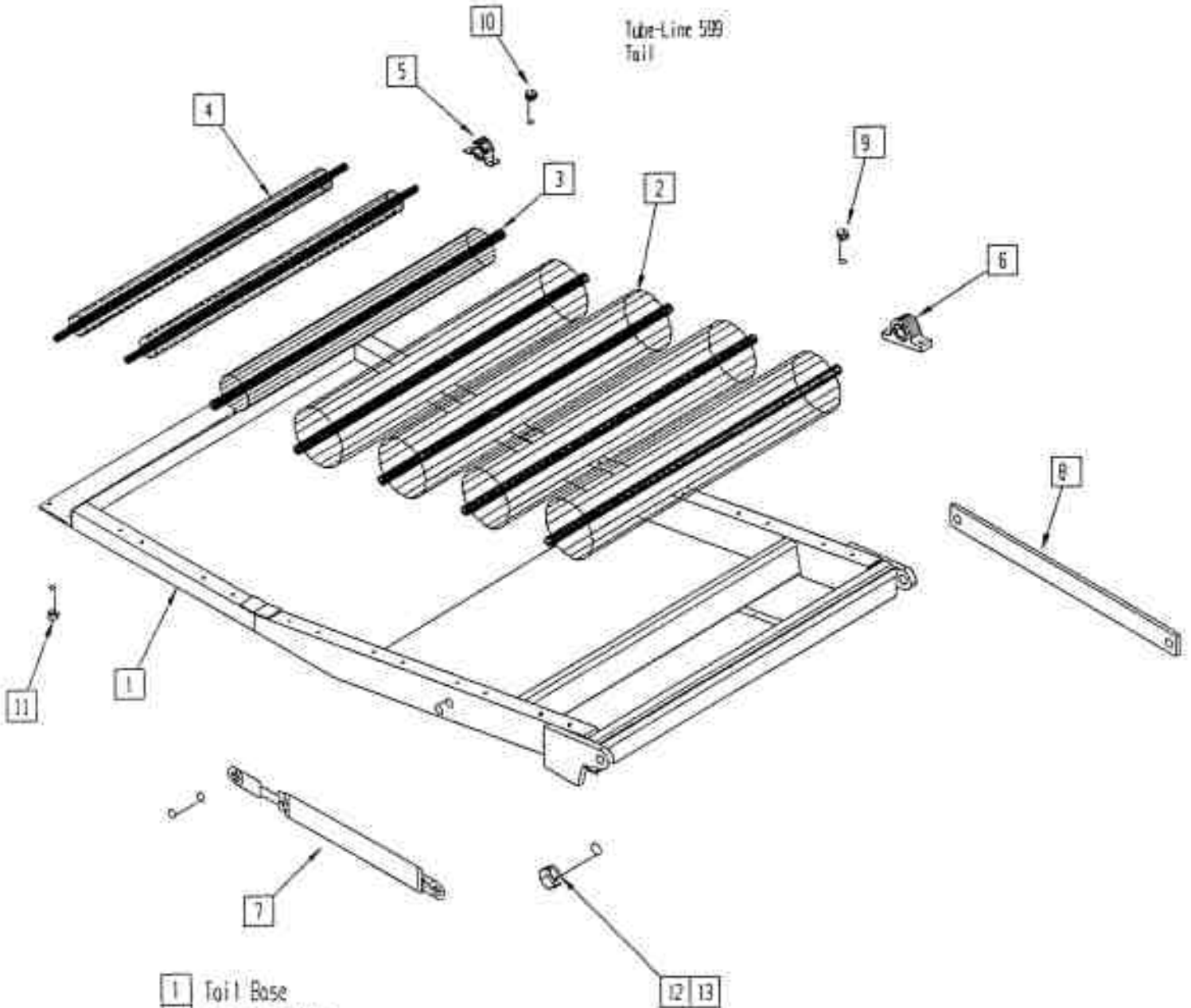
Tube-Line 599

rear roller



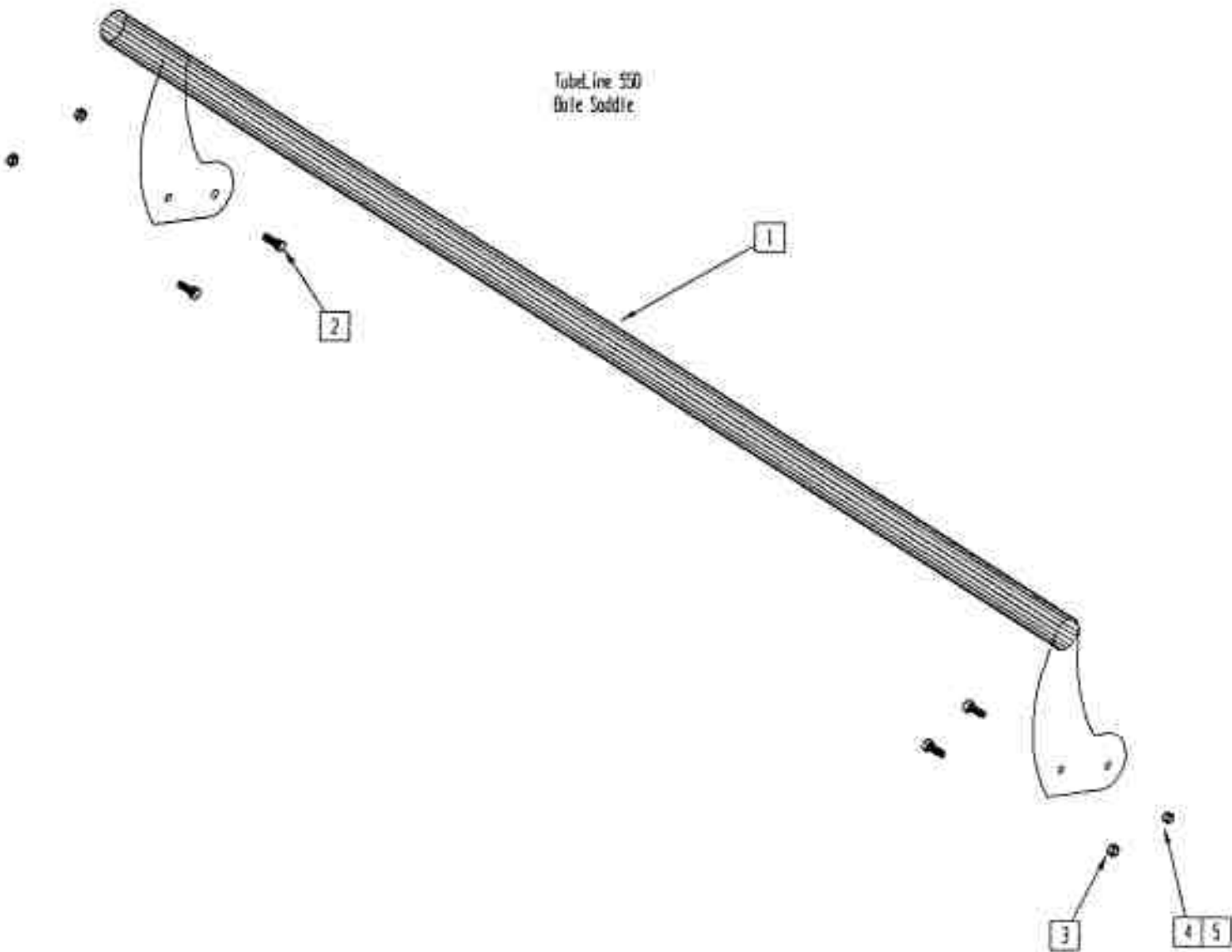
- | | |
|---|------------------------|
| 1 | 5 large roller |
| 2 | Riser Frame |
| 3 | Riser Lock Pin |
| 4 | 1' Bearing |
| 5 | 20 pc 3/8 x 1 1/2 Bolt |
| 6 | 20 pc 3/8 lockwasher |
| 7 | 20 pc 3/8 Flatwasher |

Tube-Line 599
Tail



- | | |
|----|------------------------------------|
| 1 | Tail Base |
| 2 | 4 large roller |
| 3 | 1 pc 4" roller |
| 4 | 2 pc 2 3/8" roller |
| 5 | 4 pc 3/4" bearing |
| 6 | 10 pc 1" bearing |
| 7 | 2 X 16 hydraulic cylinder |
| 8 | tail tie bar |
| 9 | 3/8 x 1 3/4 bolt |
| 10 | 5/16 x 1 bolt |
| 11 | 4 pc 5/16 x 1 1/2 countersink bolt |
| 12 | 2 pc 1 x 3 1/2 bolt |
| 13 | 2 pc 1" Nylocknut |

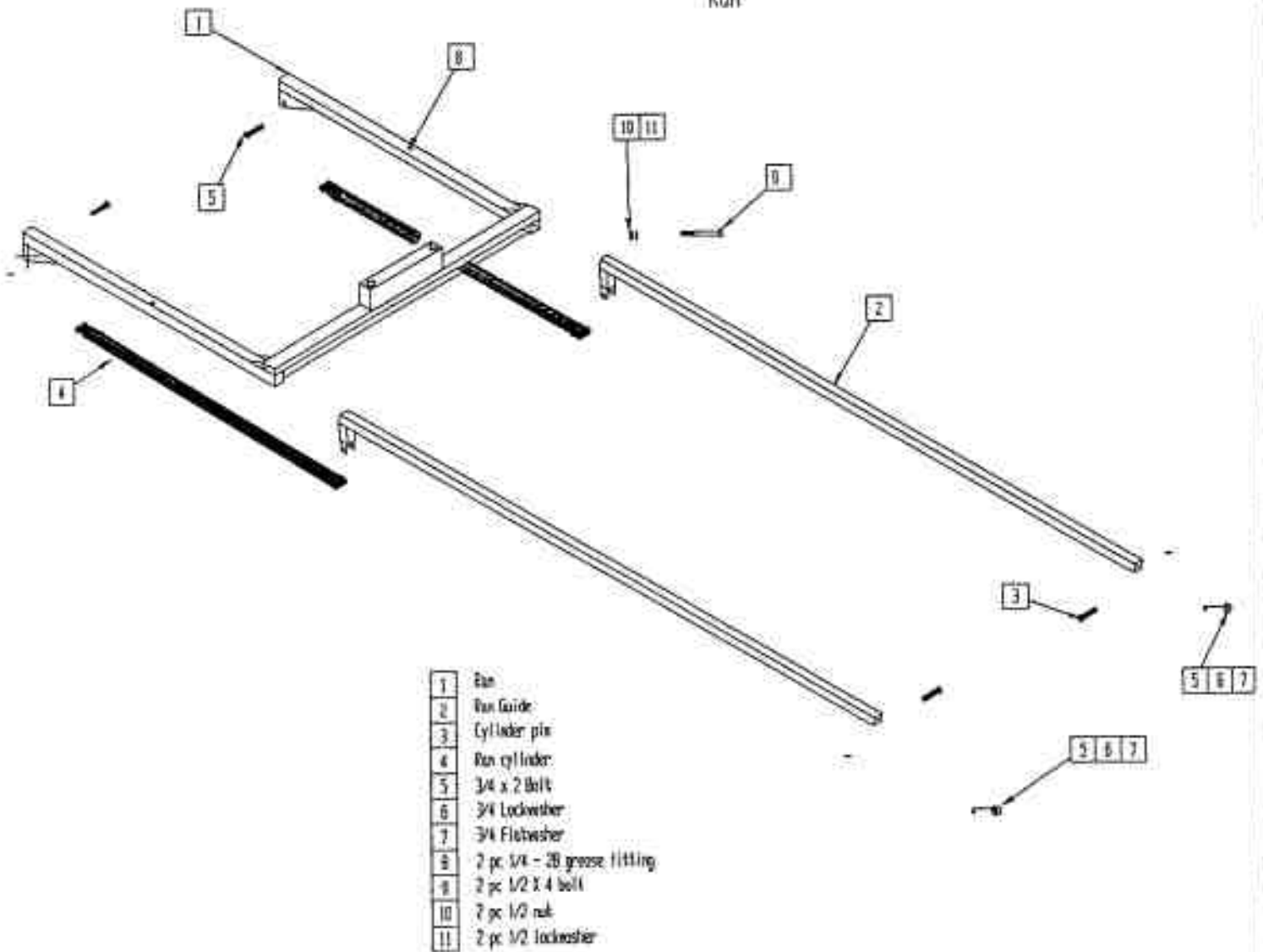
Tubeline 550
Bale Saddle



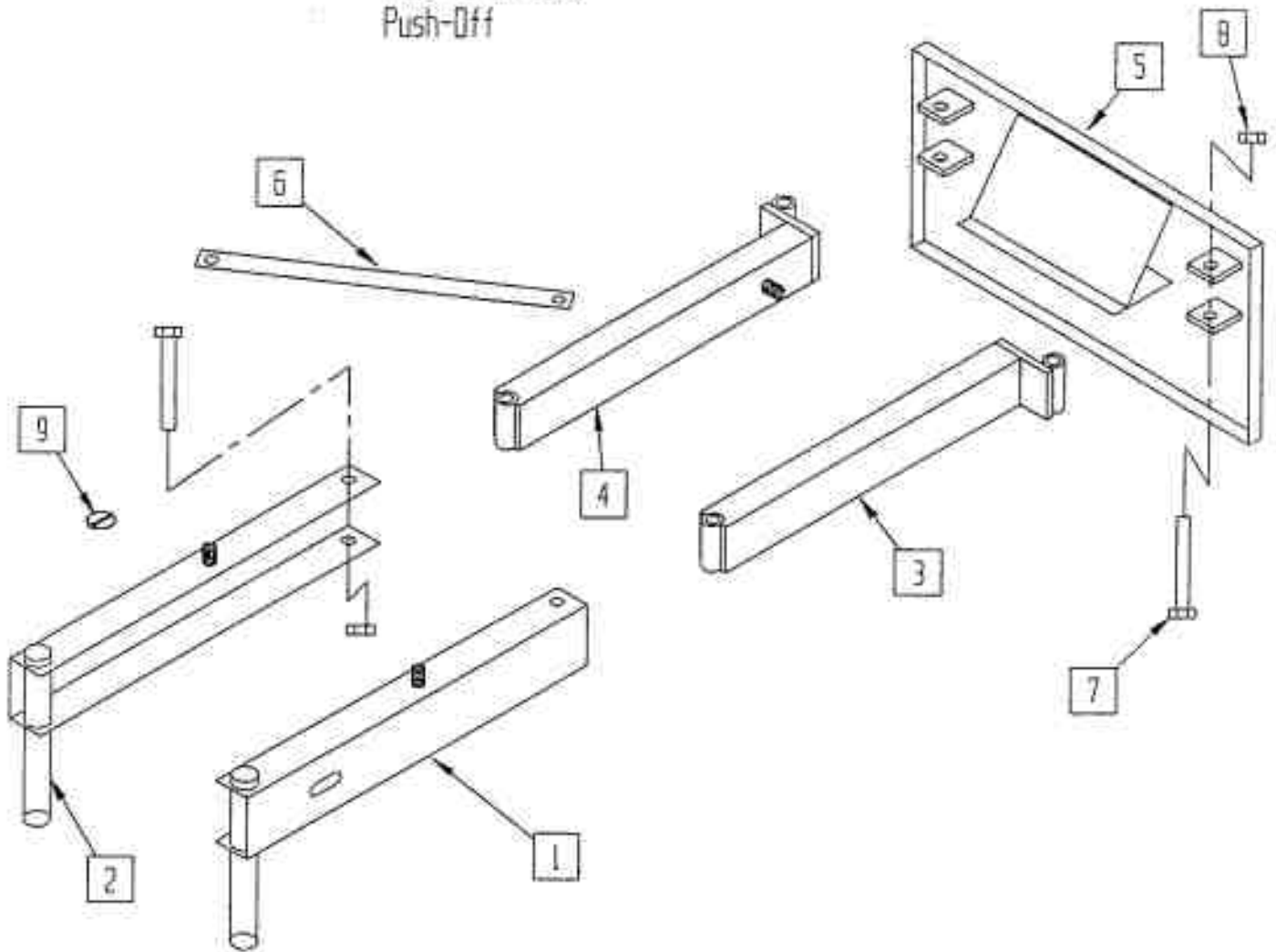
- | | |
|---|------------------|
| 1 | Saddle |
| 2 | 1/2 x 1 1/4 bolt |
| 3 | 1/2 locknut |
| 4 | 1/2 nut |
| 5 | 1/2 lockwasher |

Tube-Line 550

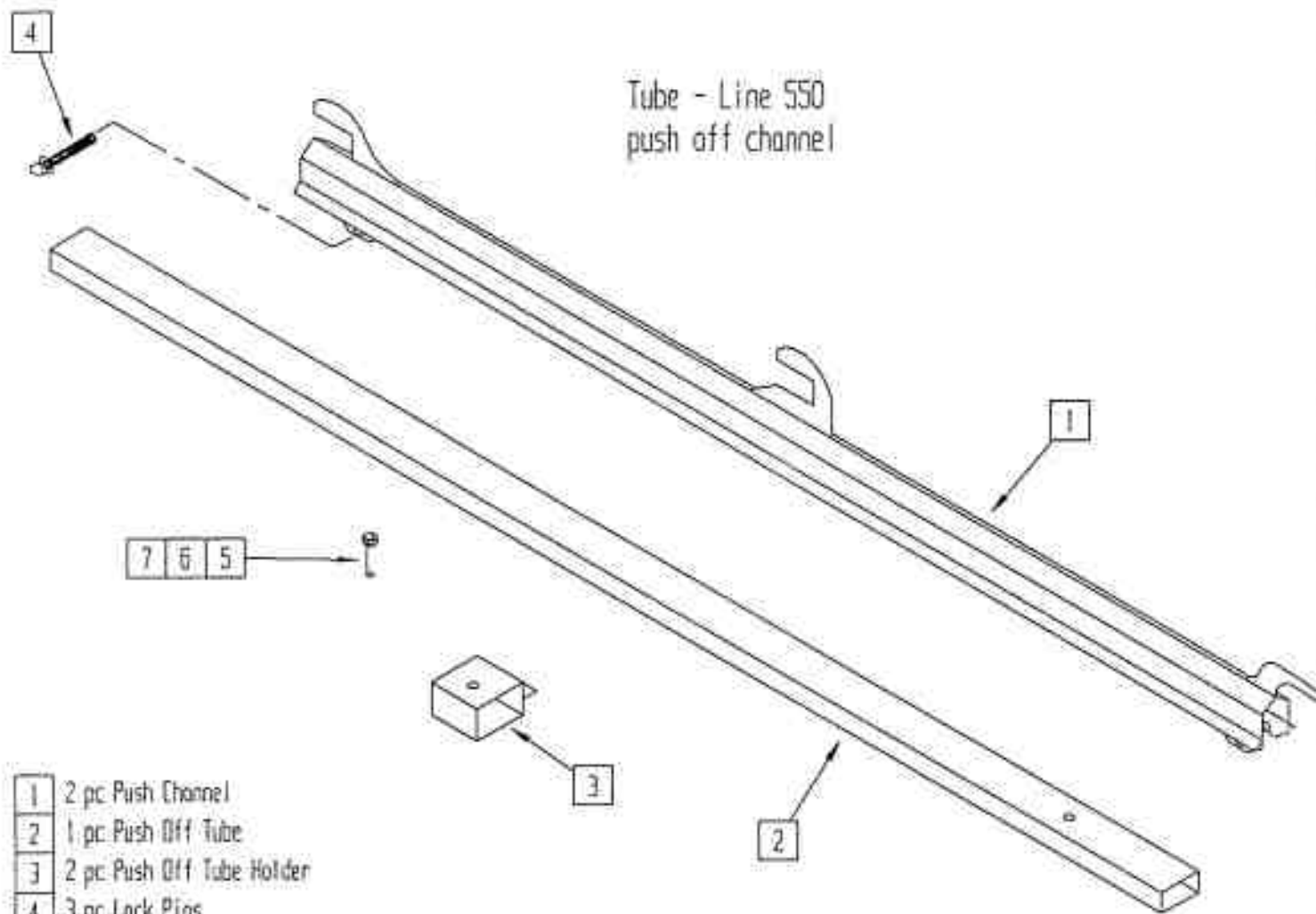
Ran



Tube-Line 5500
Push-Off



1	Left Front Arm
2	Right Front Arm
3	Left Rear Arm
4	Right Rear Arm
5	Push Plate
6	2 pc X Bar
7	4 pc 3/4 x 5 Bolt
8	4 pc 3/4 Nylocknut
9	4 pc 3/16 Linch Pin

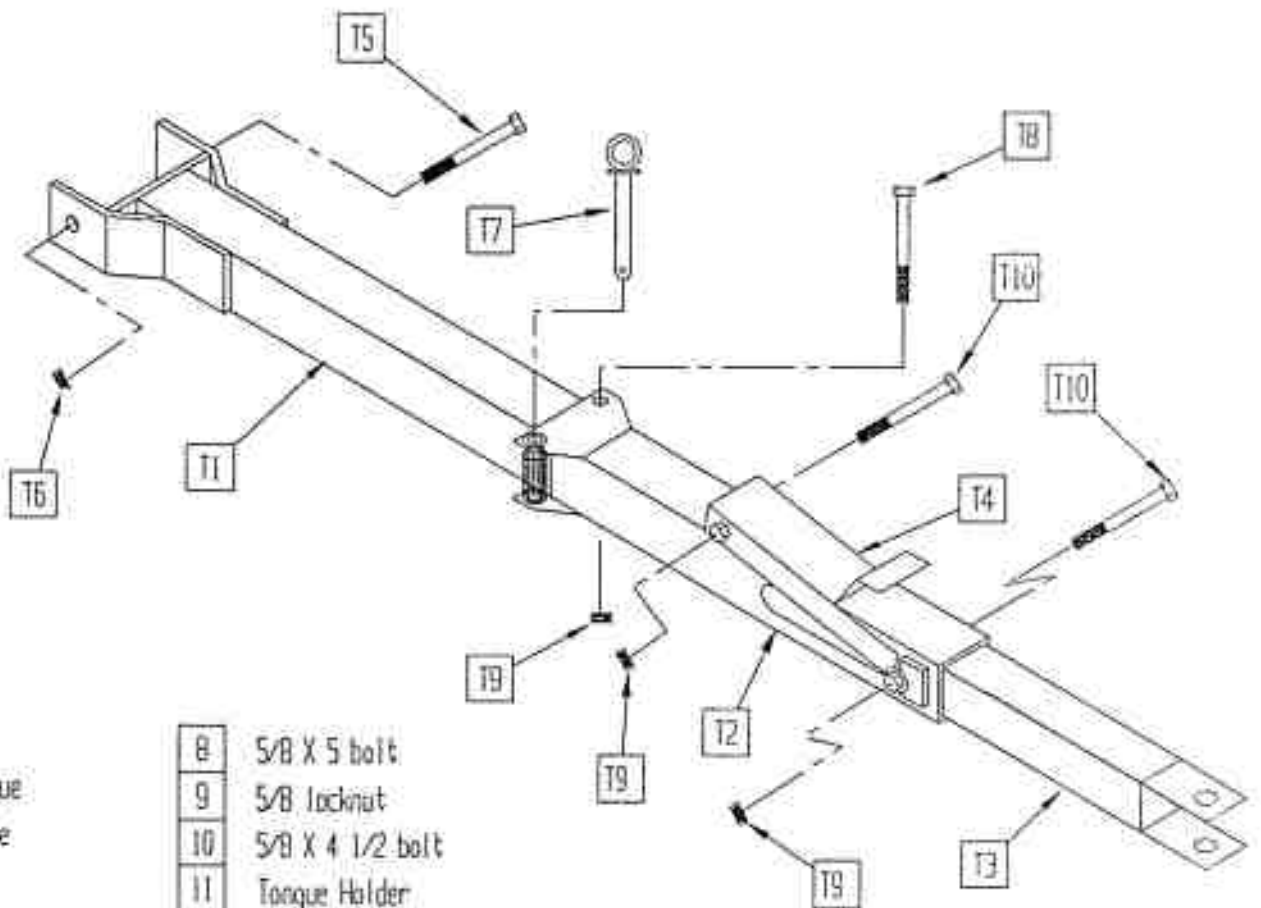
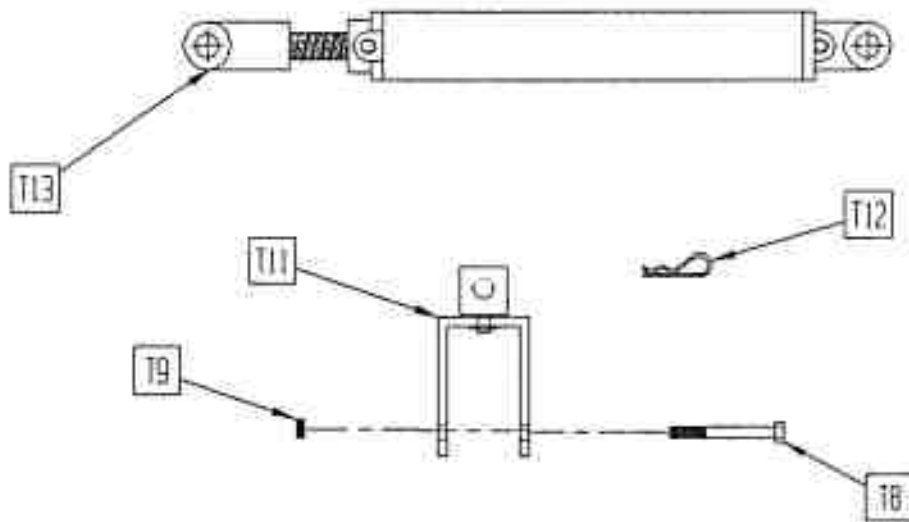


Tube - Line 550
push off channel

- | | |
|---|---------------------------|
| 1 | 2 pc Push Channel |
| 2 | 1 pc Push Off Tube |
| 3 | 2 pc Push Off Tube Holder |
| 4 | 3 pc Lock Pins |
| 5 | 4 pc 3/8 x 1 bolt |
| 6 | 4 pc 3/8 nut |
| 7 | 4 pc 3/8 lockwasher |

Tube-Line 550

Tongue



- | | |
|---|------------------|
| 1 | Main tongue |
| 2 | Swinging tongue |
| 3 | Sliding tongue |
| 4 | Tongue latch |
| 5 | 3/4 X 8 1/2 bolt |
| 6 | 3/4 locknut |
| 7 | Tongue pin |

- | | |
|----|---------------------------|
| 8 | 5/8 X 5 bolt |
| 9 | 5/8 locknut |
| 10 | 5/8 X 4 1/2 bolt |
| 11 | Tongue Holder |
| 12 | Hair pin |
| 13 | 2 X 16 Hydraulic Cylinder |

