

1996

Tube-Line 500

Parts and Service
Manual and Automatic

Notes

Electric Solenoid valves can be manually operated by pushing a small punch into end of spool and holding it in .

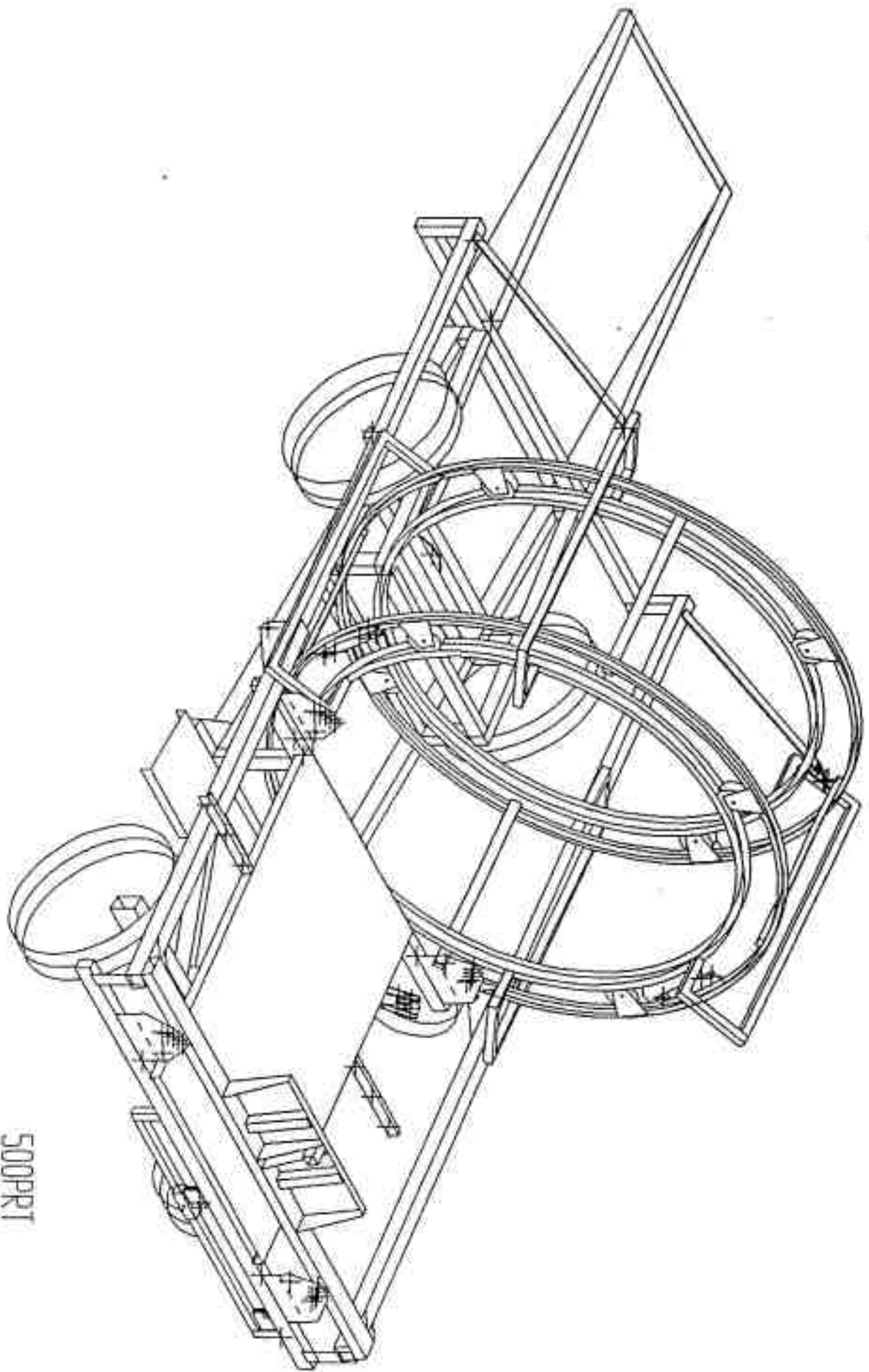
CAUTION STAY AWAY FROM WRAP HOOP WHEN ENGINE IS RUNNING.

Inside Control Panel, control relays are numbered CR1 to CR5 from left to right relay CR1 is wired to table trigger . CR1 will activate solenoid valve to extend ram cylinder and CR5 . CR5 controls throttle solenoid. CR2 and CR3 are wired to motion sensor switch at rear roller, when switch arm is between teeth on sprocket, CR3 is energized, as roller turns switch arm it will be pushed to top of tooth on sprocket energizing CR2 and vice-versa . After both relays CR2 and CR3 are activated, wrap solenoid is energized causing wrap motor to turn . When ram cylinder is extended to the limit switch by the engine CR1,CR2 and CR3 will turn off and CR4 turns on. Wrap motor will stop and ram cylinder will retract until ram cylinder trips limit switch at front end of table . All control relays will turn off .

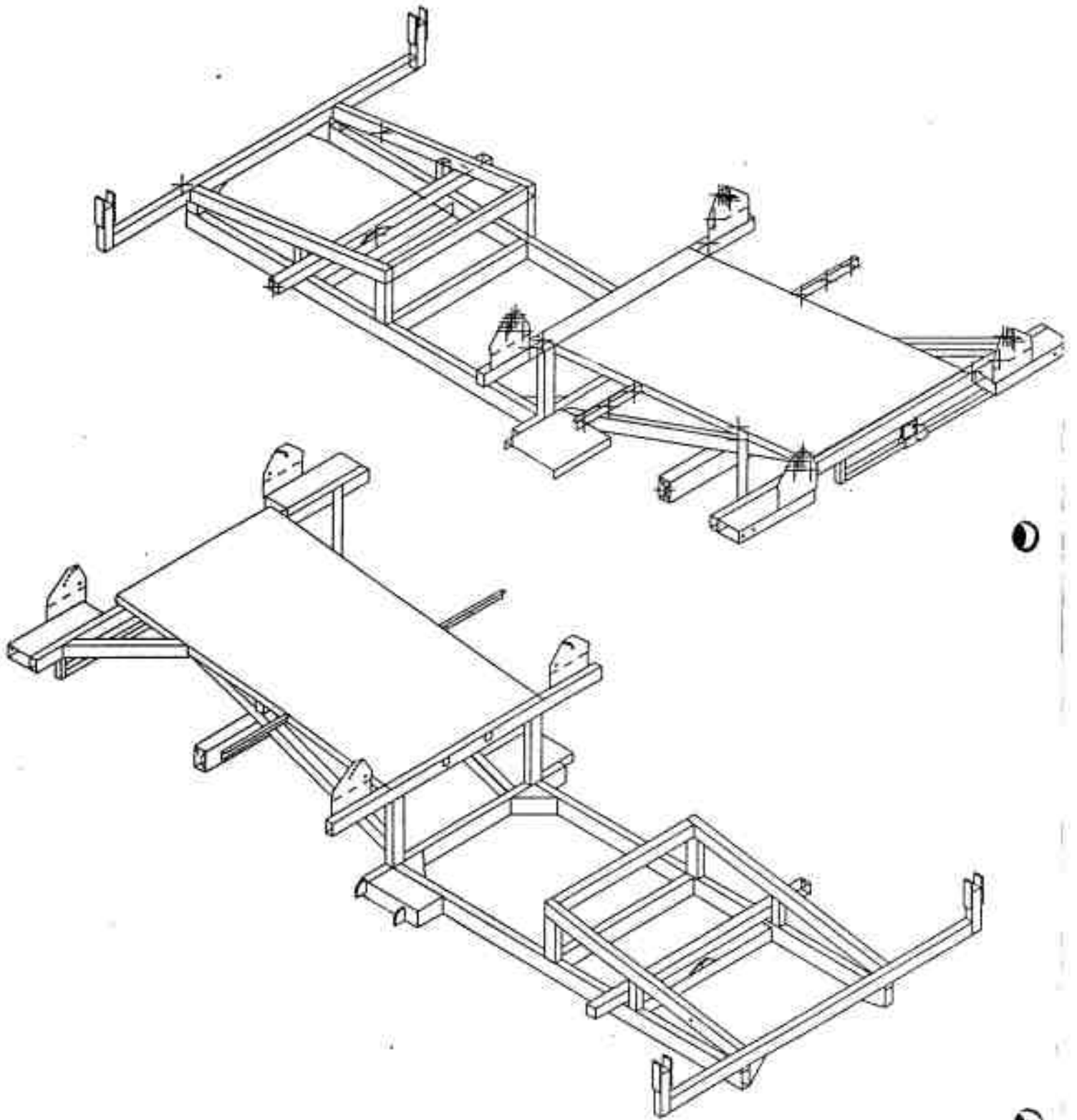
Testing can be done by pushing trigger plate then going to the back and turning roller with sprocket, then waiting until machine goes through the cycle . Or, you can push the small square button on end of control relay 1, then push button on control relay 2 or 3, whichever is not activated. Then waiting until machine goes through the cycle .

When running machine through the cycle and wrapper motor or the cylinders do not work, check flow control valve to see if flow is going to both motor and cylinder .

Engine is stopped by grounding ignition, in case of ignition failure, make sure that stop switch wire is not shorting to frame and engine stop switch is not in closed position.



500PRT



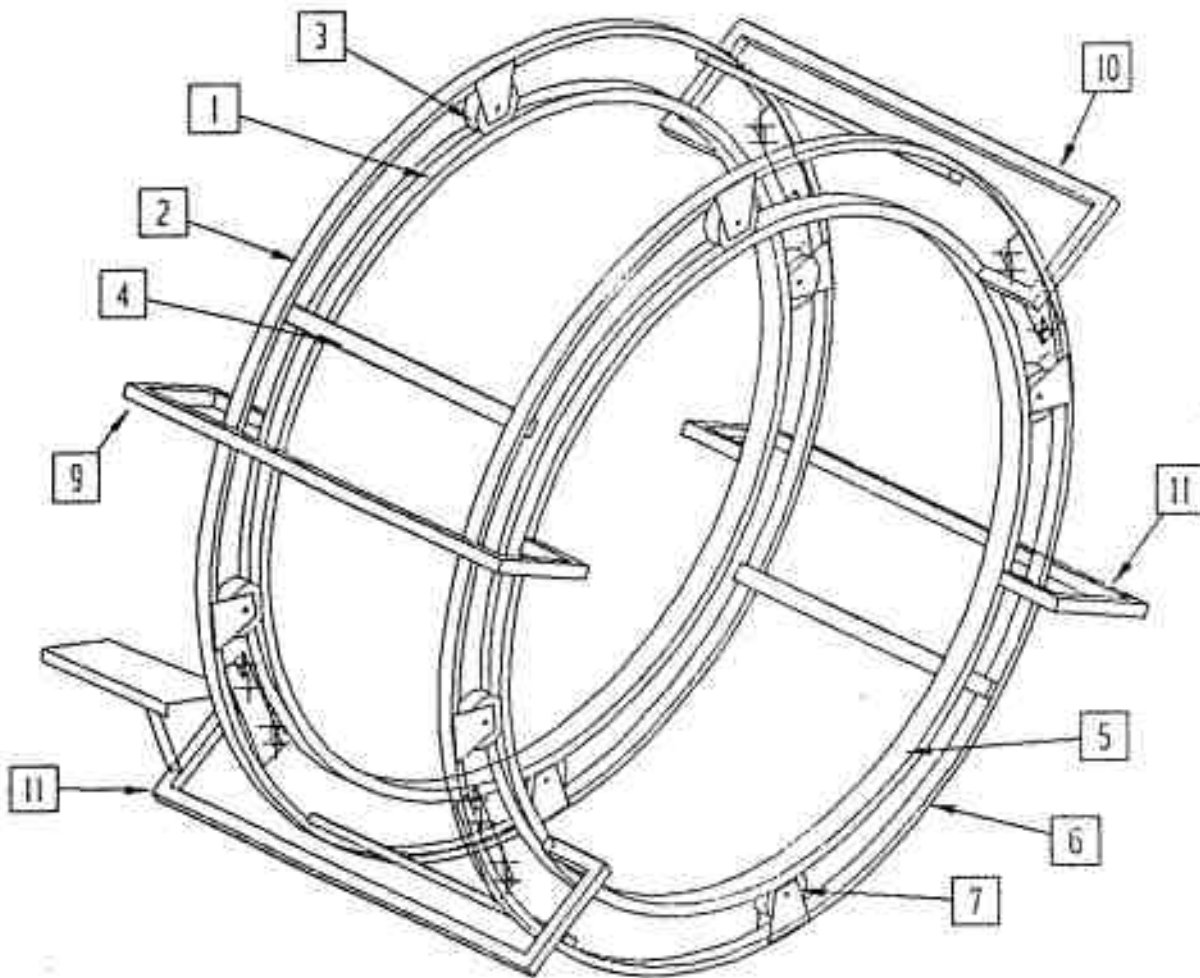
t50nodr1

Tube-Line 500
Parts Manual
Index

Wrap Chamber	3
Hoop Tie	4
Hoop Wheels and Axle	5
Wrapper Hardware	6
Safety Mesh	7
Wrap Chamber and Valve Brace	8
Drive Wheel and Hydraulic Motor	9
Rear Axle and Hubs	10
Brakes	11
Rear Roller	12
Tail	13
Short Roller	14
Bale Saddle	15
Ram	16
Push Tube and Push Plate	17
Tongue	18
Mud Flap	19
Hydraulic Tank and Filter	20
Engine and Hydraulic Pump	21
Hydraulic Valve (manual)	22
Engine Cover and Decal Plate	23
Hydraulic Valve (automatic)	24
Limit Switch	25
Control Panel	26
Bale Trigger and Battery holder	27
Throttle Solenoid and Cable	28
Sequence of Operation (manual)	29
Sequence of Operation (automatic)	30
Hydraulic Schematic Diagram (manual)	31
Hydraulic Schematic Diagram (automatic)	32
Electric Schematic Diagram (automatic)	33
Part Numbers	
Hydraulic Valve Parts	

Tube-Line 500

Wrap Chamber



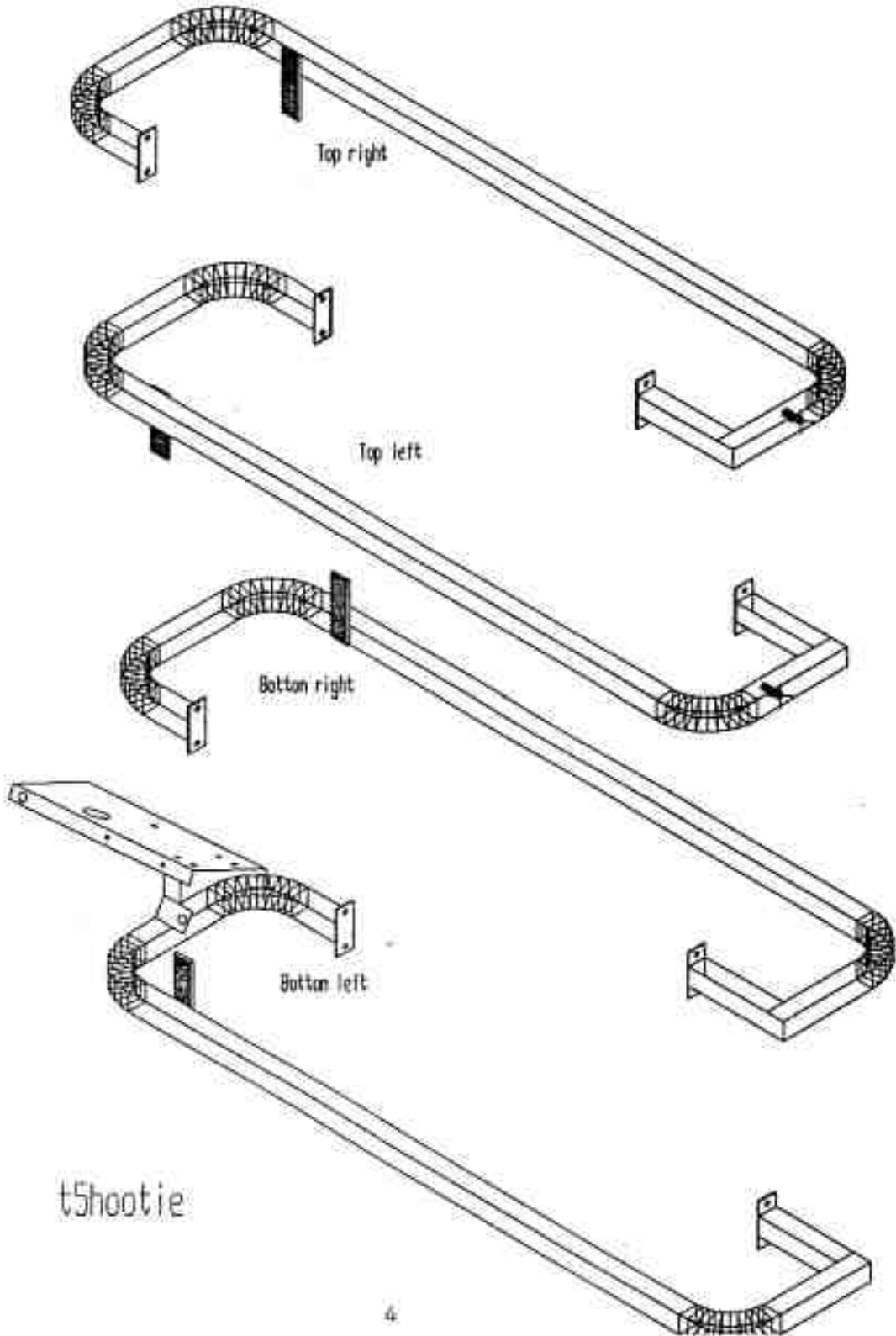
- | | |
|---|--------------------|
| 1 | Front channel ring |
| 2 | Front Tube ring |
| 3 | Front Wheel 6 in |
| 4 | Ring Tie |
| 5 | Rear Channel ring |
| 6 | Rear Tube ring |

- | | |
|----|--|
| 7 | Rear Wheel 4 in |
| 8 | Mounting Bolt 1/2 X 2 / nut / lockwasher |
| 9 | Top Left Hoop tie |
| 10 | Top Right Hoop tie |
| 11 | Bottom Right Hoop tie |
| 12 | Bottom Left Hoop tie |

WCH

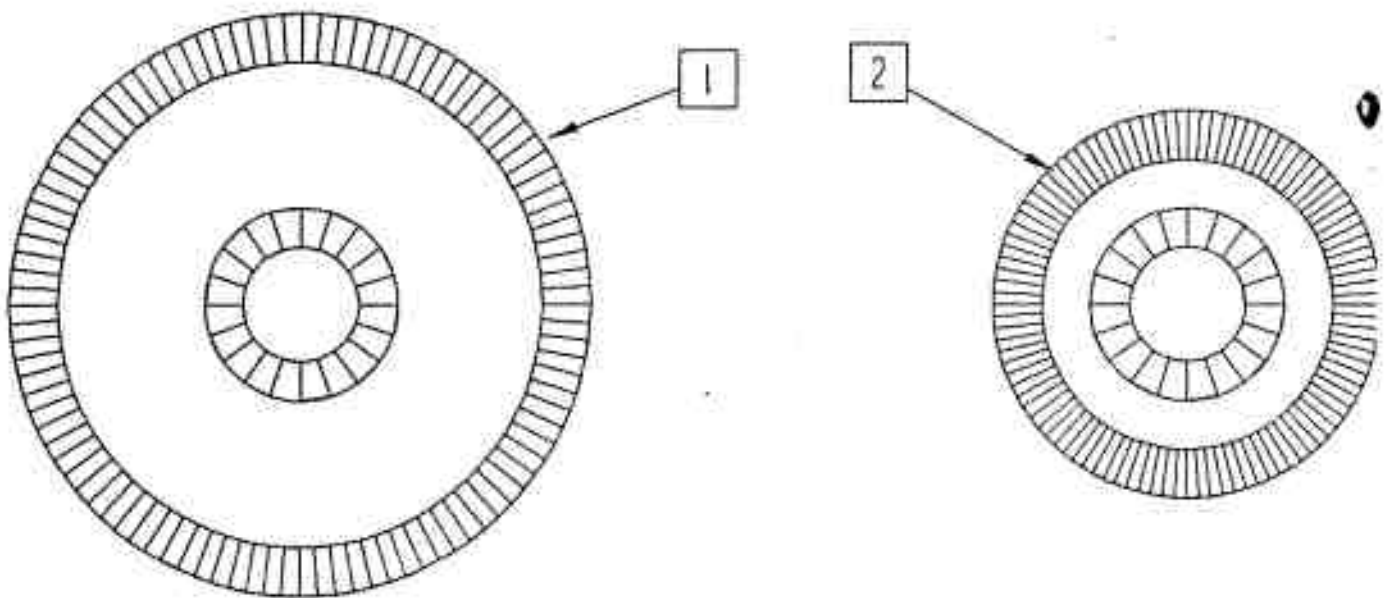
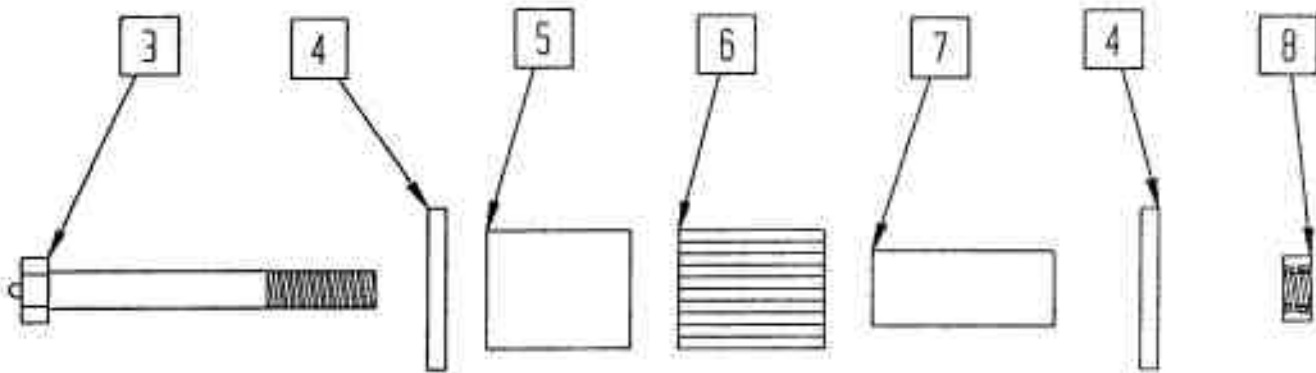
Tube-Line 500

Hoop tie



Tube-Line 500

Hoop wheels

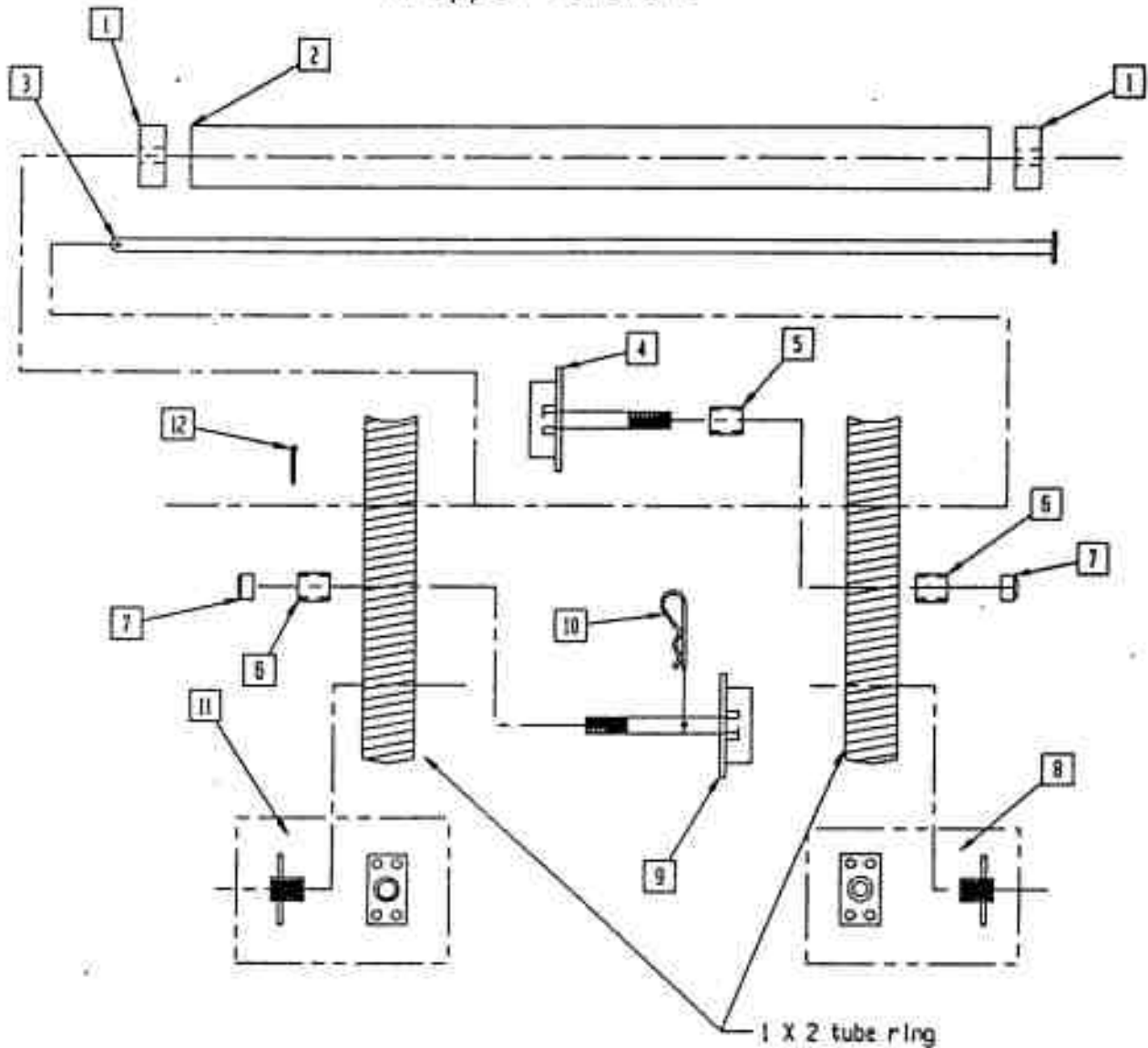


- | | |
|---|----------------|
| 1 | 6 in wheel |
| 2 | 4 in wheel |
| 3 | axle bolt |
| 4 | bearing seal |
| 5 | outer race |
| 6 | roller bearing |
| 7 | inner race |
| 8 | locknut |

HWEE

Tube-Line 500

wrapper hardware

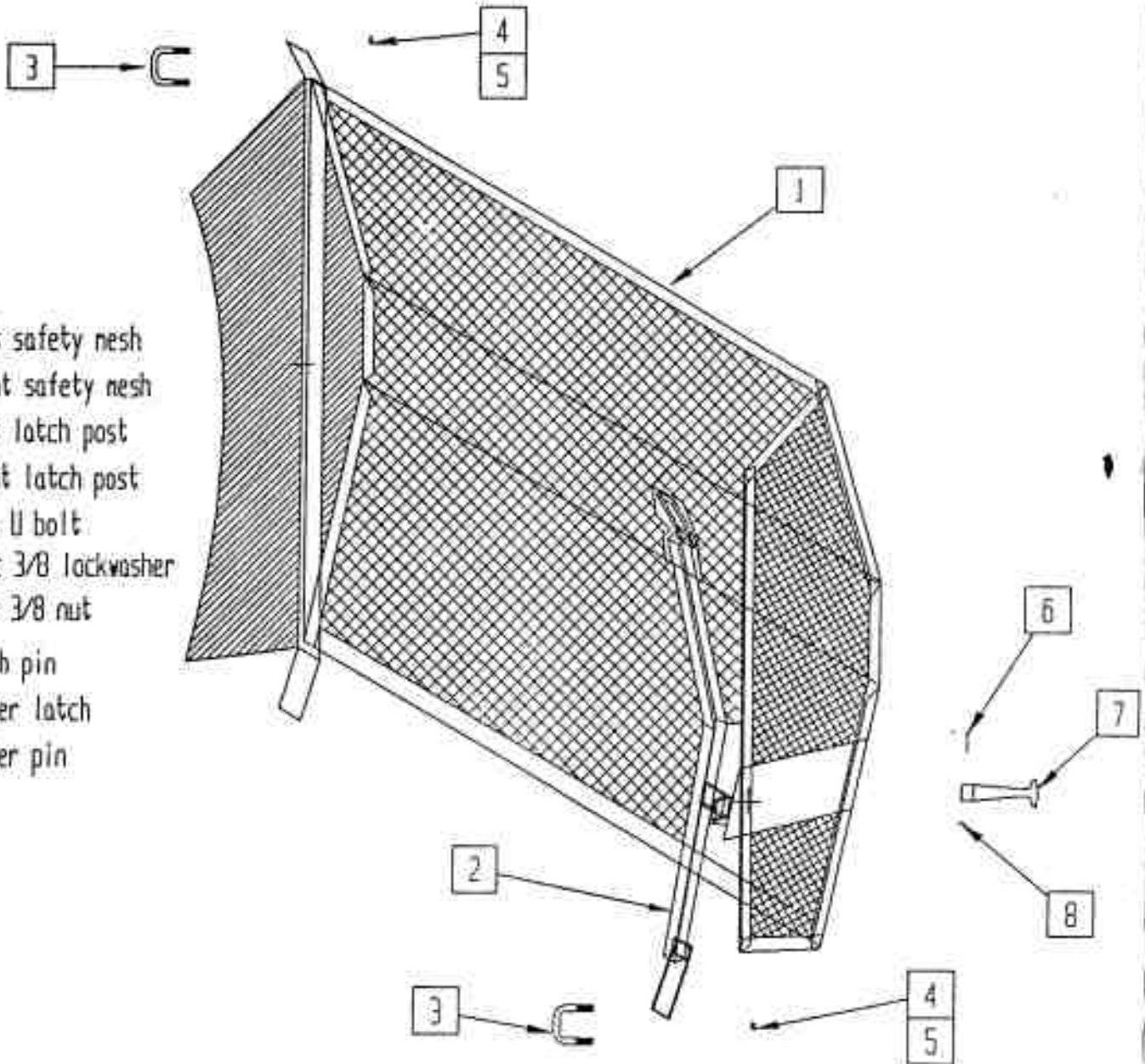


- | | |
|----|-------------------------------|
| 1 | 2 in od X 9/16 id X 1 HMWPC |
| 2 | 2 in ABS pipe |
| 3 | plastic roller pin |
| 4 | plastic wrap spool |
| 5 | spacer |
| 6 | Oilite bearing |
| 7 | Nylon locknut |
| 8 | stretch wrap holder small end |
| 9 | plastic wrap spool |
| 10 | hair pin |
| 11 | stretch wrap holder large end |
| 12 | cotter pin |

Tube-Line 500

Safety nesh

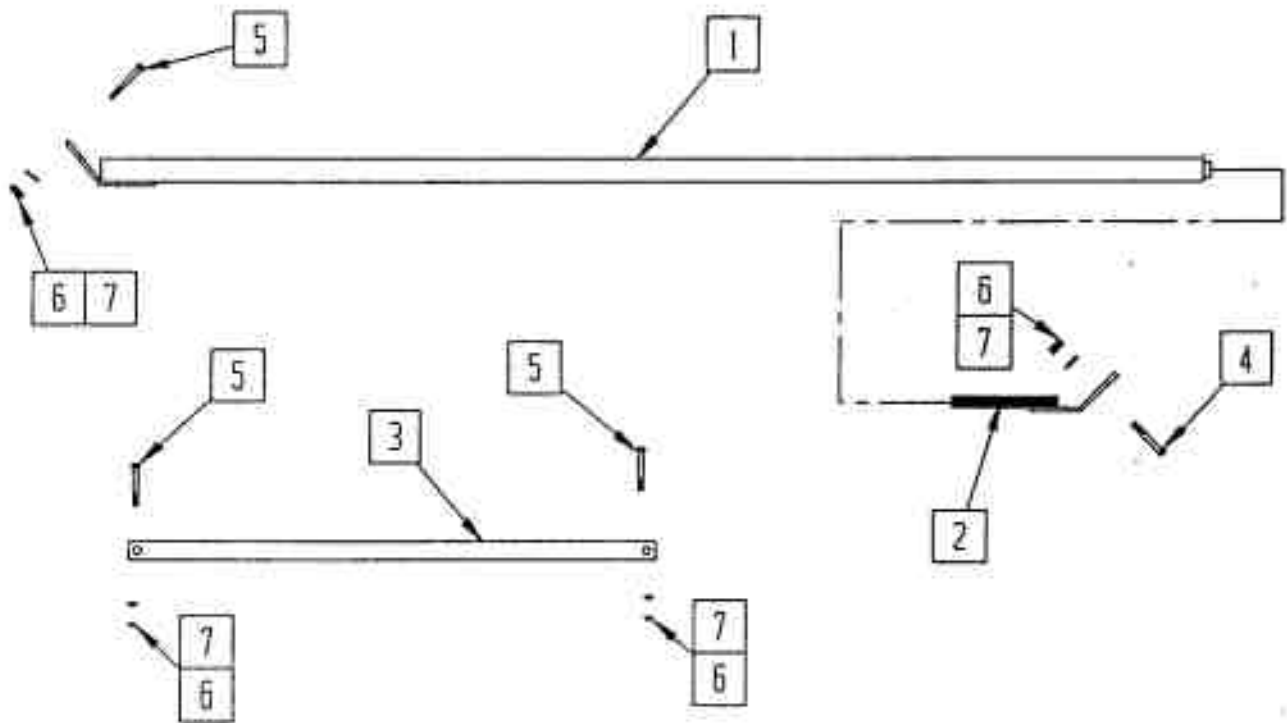
- | | |
|-----|---------------------|
| 1 L | Left safety nesh |
| 1 R | Right safety nesh |
| 2 L | Left latch post |
| 2 R | Right latch post |
| 3 | 4 pc U bolt |
| 4 | 4 pc 3/8 lockwasher |
| 5 | 8 pc 3/8 nut |
| 6 | Latch pin |
| 7 | Rubber latch |
| 8 | cotter pin |



Soft

Tube-Line 500

Wrap brace & valve brace

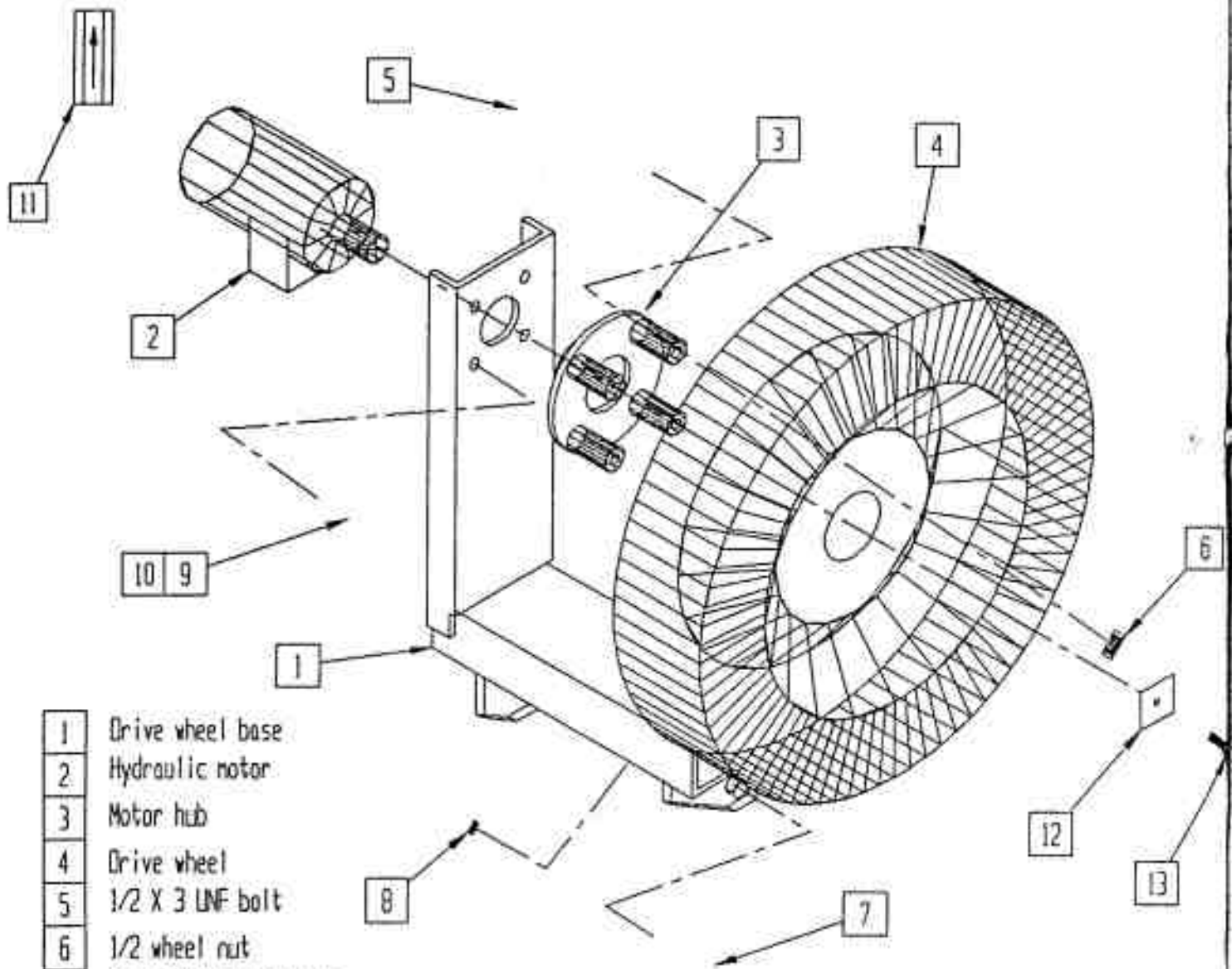


- | | |
|---|-------------------|
| 1 | Bottom brace part |
| 2 | Top brace part |
| 3 | Valve brace |
| 4 | 3/8 X 2 bolt |
| 5 | 3/8 X 1 bolt |
| 6 | 3/8 nut |
| 7 | 3/8 lockwasher |

braceW

Tube-Line 500

Drive wheel

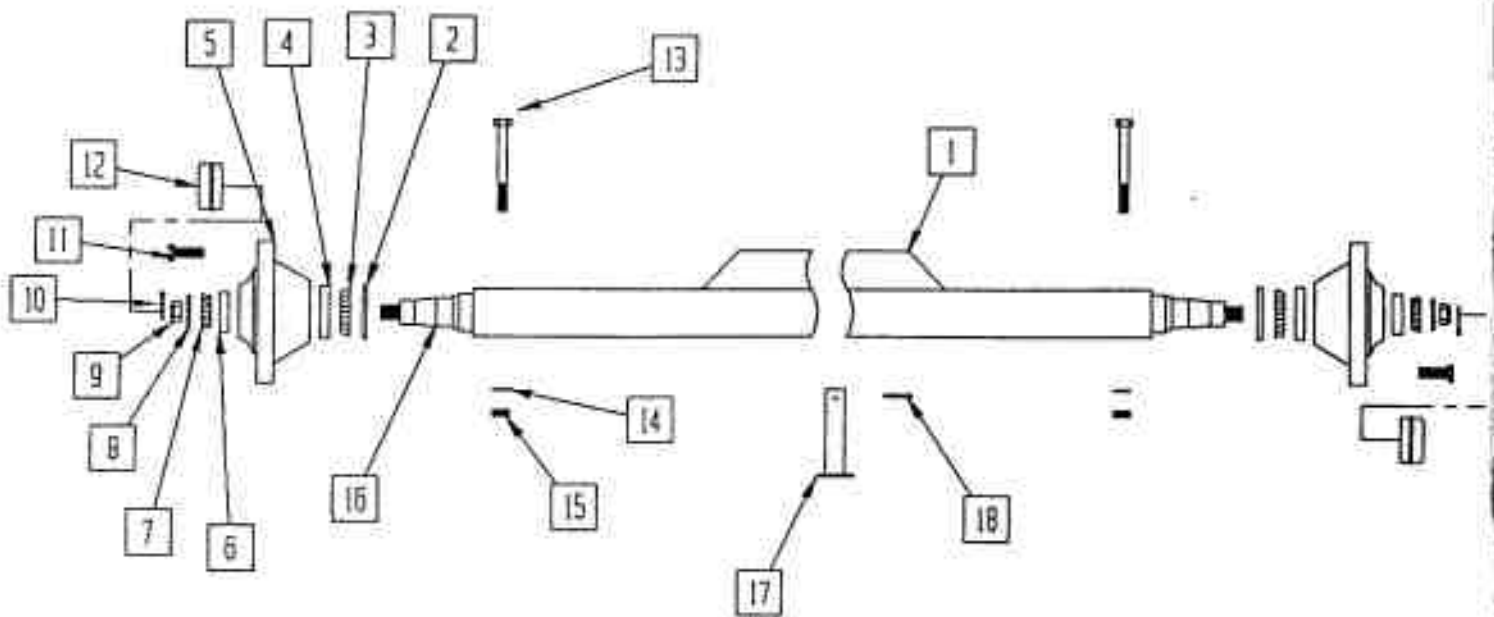


- | | |
|----|-----------------------------------|
| 1 | Drive wheel base |
| 2 | Hydraulic motor |
| 3 | Motor hub |
| 4 | Drive wheel |
| 5 | 1/2 X 3 UNF bolt |
| 6 | 1/2 wheel nut |
| 7 | 2 pc 5/8 X 1 1/2 bolt |
| 8 | 2 pc 5/8 locknut |
| 9 | 4 pc 3/8 X 3/4 bolt |
| 10 | 4 pc 3/8 lockwasher |
| 11 | Check Valve (manual model only) |
| 12 | washer |
| 13 | 1/4 - 20 X 1 bolt / lockwasher |

drwhl,

Tube-Line 500

Axle/spindle/hub



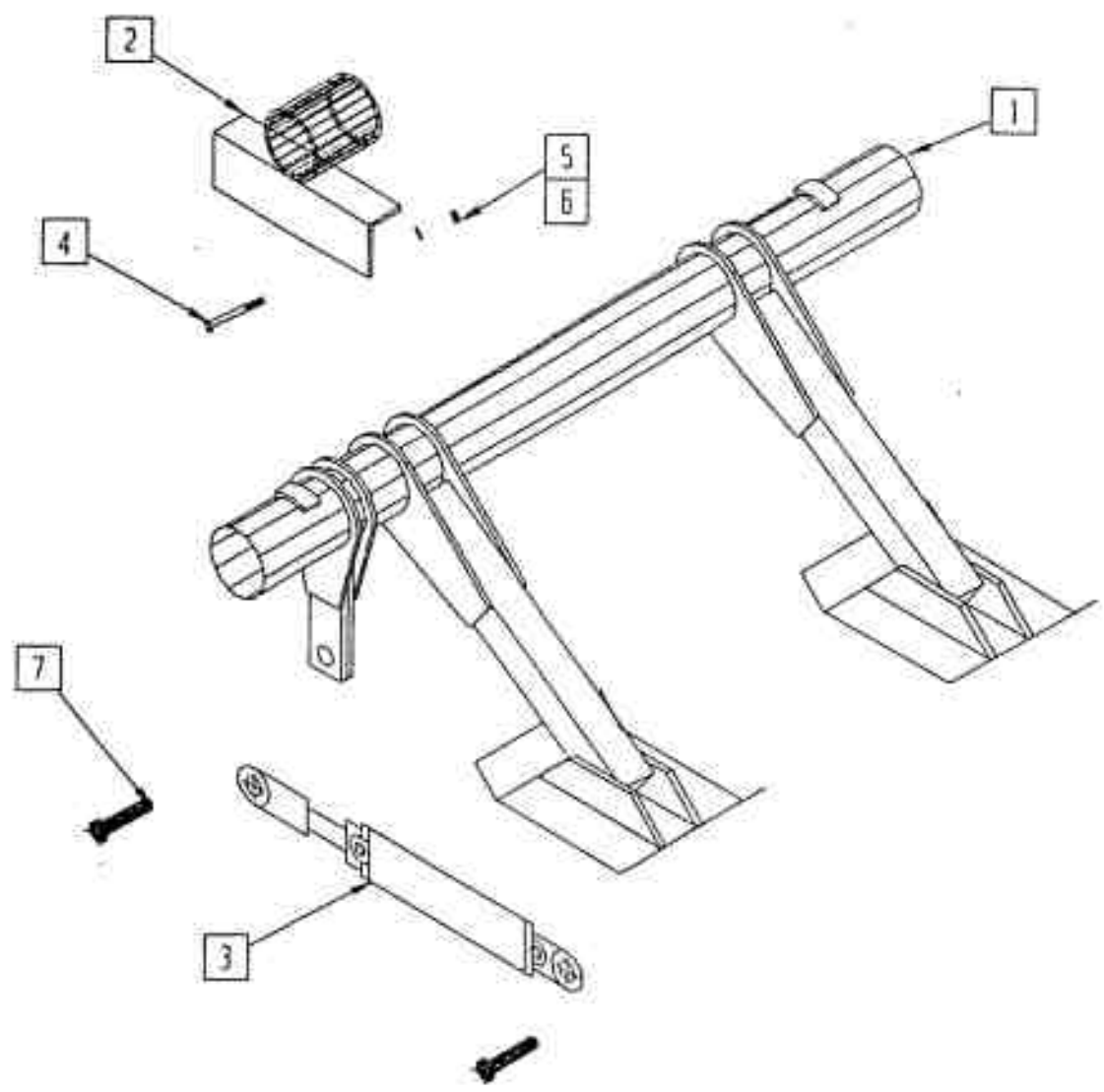
1	Axle
2	seal
3	inner bearing
4	inner bearing race
5	hub
6	outer bearing race
7	outer bearing
8	flat washer
9	wheel nut
10	cotter pin

11	wheel stud
12	dust cap
13	spindle bolt
14	1/2 lockwasher
15	1/2 nut
16	spindle
17	axle pin
18	cotter pin

Axle

Tube-Line 500

Brake

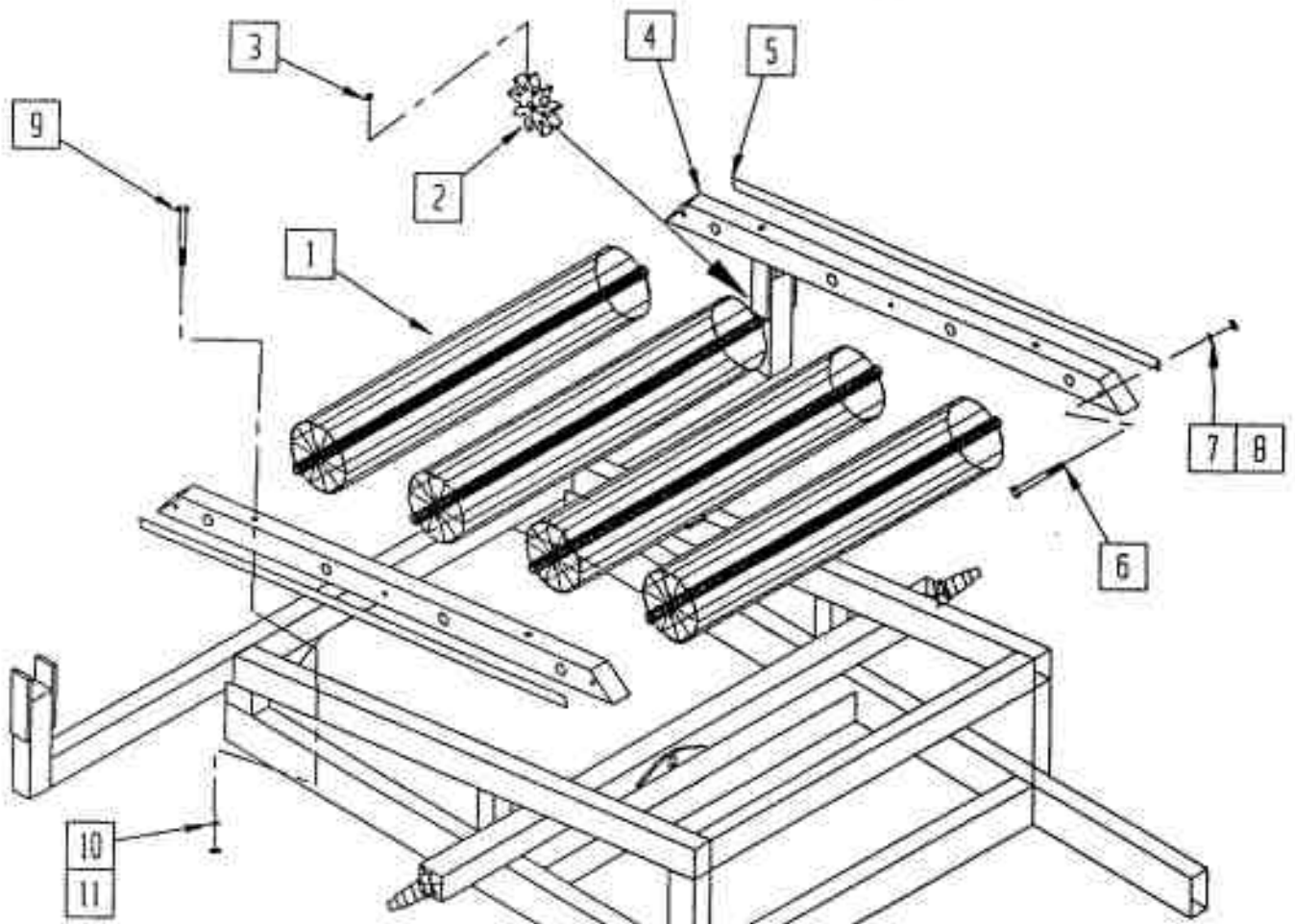


- | | |
|---|---------------------|
| 1 | Brake racker |
| 2 | Bearing |
| 3 | 2 1/2 X 8 cylinder |
| 4 | 1/2 X 3 1/2 bolt |
| 5 | 4 pc 1/2 nut |
| 6 | 4 pc 1/2 lockwasher |
| 7 | 2 pc cylinder pin |

Brake

Tube-Line 500

rear roller



- | | |
|----|------------------------------------|
| 1 | 4 large roller |
| 2 | sprocket motion control (electric) |
| 3 | 2 pc 3/8 set screw |
| 4 | 2 pc short wood strip |
| 5 | 1/4 X 1 retainer strip |
| 6 | 6 pc 3/8 X 2 1/2 carriage bolt |
| 7 | 6 pc 3/8 lockwasher |
| 8 | 6 pc 3/8 nut |
| 9 | 4 pc 1/2 X 6 carriage bolt |
| 10 | 4 pc 1/2 lockwasher |
| 11 | 4 pc 1/2 nut |

rol

